



U.S. Department of the Interior
Bureau of Land Management

March 2024

Greater Sage-Grouse

Volume 2: Appendix 1. Maps

Part 4: Maps 2.32 — 2.43

Draft Resource Management Plan Amendment and Environmental Impact Statement



The Bureau of Land Management's multiple-use mission is to sustain the health and productivity of the public lands for the use and enjoyment of present and future generations. The Bureau accomplishes this by managing such activities as outdoor recreation, livestock grazing, mineral development, and energy production, and by conserving natural, historical, cultural, and other resources on public lands.

Cover Photo: Steve Ting

Lower Bar Photos (L to R):

US Fish and Wildlife, Rachel Woita, James Yule

Appendix I

Maps

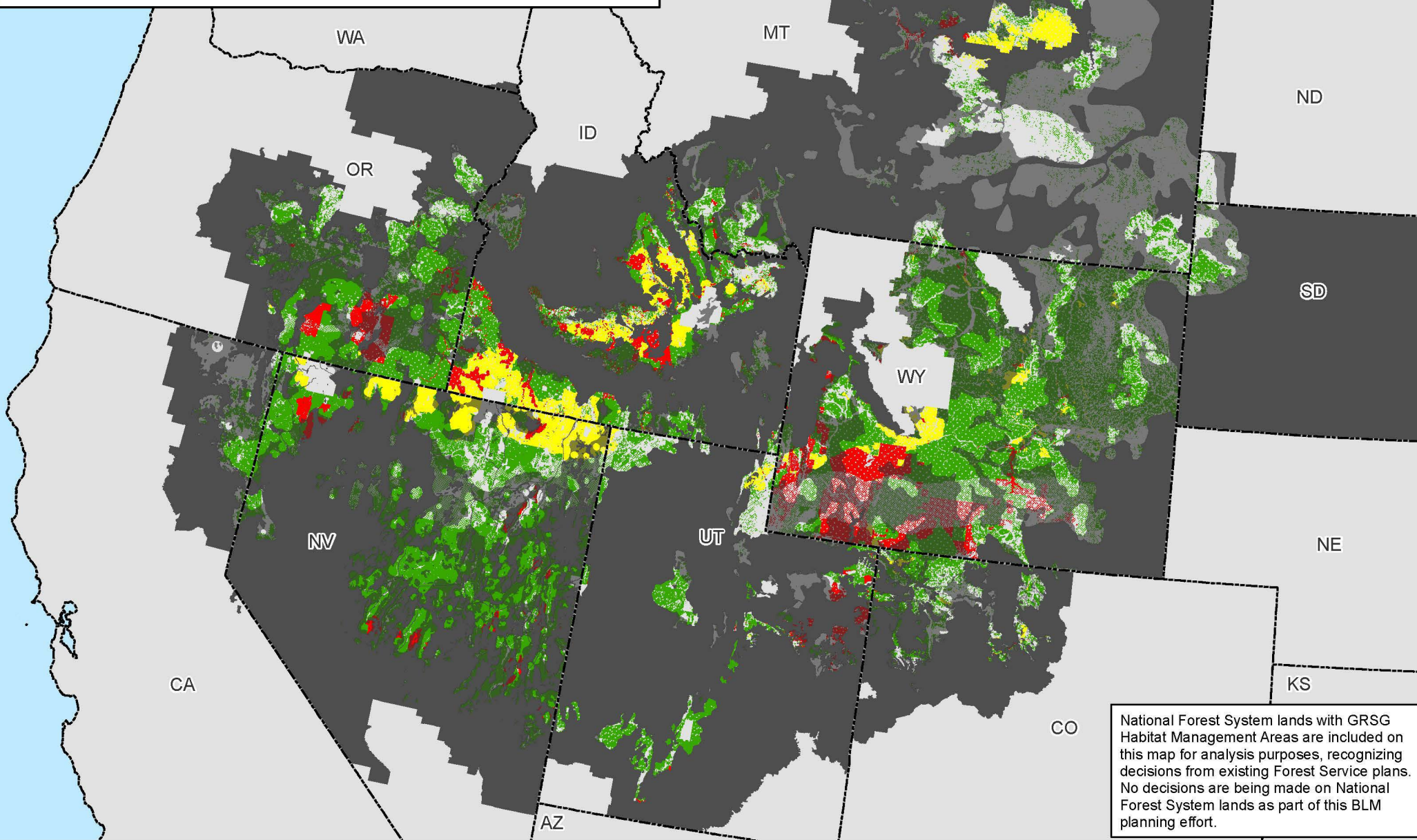
This page intentionally left blank.

Appendix I. Maps

- 1.1 Greater Sage-Grouse West-Wide Planning Area
- 2.1 Greater Sage-Grouse Habitat Management Areas, Alternative 1
- 2.2 Greater Sage-Grouse Habitat Management Areas, Alternative 2
- 2.3 Greater Sage-Grouse Habitat Management Areas, Alternative 3
- 2.4 Greater Sage-Grouse Habitat Management Areas, Alternative 4
- 2.5 Greater Sage-Grouse Habitat Management Areas, Alternative 5
- 2.6 Greater Sage-Grouse Habitat Management Areas, Alternative 6
- 2.7 Greater Sage-Grouse Biologically Significant Units, Alternative 2
- 2.8 Fluid Minerals (Oil and Gas), Alternative 1
- 2.9 Fluid Minerals (Oil and Gas), Alternative 2
- 2.10 Fluid Minerals (Oil and Gas), Alternative 3
- 2.11 Fluid Minerals (Oil and Gas), Alternative 4
- 2.12 Fluid Minerals (Oil and Gas), Alternative 5
- 2.13 Fluid Minerals (Oil and Gas), Alternative 6
- 2.14 Geothermal, Alternative 1
- 2.15 Geothermal, Alternative 2
- 2.16 Geothermal, Alternative 3
- 2.17 Geothermal, Alternative 4
- 2.18 Geothermal, Alternative 5
- 2.19 Geothermal, Alternative 6
- 2.20 Non-Energy Leasable Minerals, Alternative 1
- 2.21 Non-Energy Leasable Minerals, Alternative 2
- 2.22 Non-Energy Leasable Minerals, Alternative 3
- 2.23 Non-Energy Leasable Minerals, Alternative 4
- 2.24 Non-Energy Leasable Minerals, Alternative 5
- 2.25 Non-Energy Leasable Minerals, Alternative 6
- 2.26 Salable (Mineral Materials), Alternative 1
- 2.27 Salable (Mineral Materials), Alternative 2
- 2.28 Salable (Mineral Materials), Alternative 3
- 2.29 Salable (Mineral Materials), Alternative 4
- 2.30 Salable (Mineral Materials), Alternative 5
- 2.31 Salable (Mineral Materials), Alternative 6
- 2.32 Locatable Minerals, Alternative 1
- 2.33 Locatable Minerals, Alternative 2
- 2.34 Locatable Minerals, Alternative 3
- 2.35 Locatable Minerals, Alternative 4
- 2.36 Locatable Minerals, Alternative 5
- 2.37 Locatable Minerals, Alternative 6
- 2.38 Major Rights-of-Way, Alternative 1
- 2.39 Major Rights-of-Way, Alternative 2
- 2.40 Major Rights-of-Way, Alternative 3
- 2.41 Major Rights-of-Way, Alternative 4
- 2.42 Major Rights-of-Way, Alternative 5
- 2.43 Major Rights-of-Way, Alternative 6
- 2.44 Wind Energy Management, Alternative 1

- 2.45 Wind Energy Management, Alternative 2
- 2.46 Wind Energy Management, Alternative 3
- 2.47 Wind Energy Management, Alternative 4
- 2.48 Wind Energy Management, Alternative 5
- 2.49 Wind Energy Management, Alternative 6
- 2.50 Solar Energy Management, Alternative 1
- 2.51 Solar Energy Management, Alternative 2
- 2.52 Solar Energy Management, Alternative 3
- 2.53 Solar Energy Management, Alternative 4
- 2.54 Solar Energy Management, Alternative 5
- 2.55 Solar Energy Management, Alternative 6
- 2.56 Designated Utility Corridors, Alternative 1
- 2.57 Designated Utility Corridors, Alternative 2
- 2.58 Designated Utility Corridors, Alternative 3
- 2.59 Designated Utility Corridors, Alternative 4
- 2.60 Designated Utility Corridors, Alternative 5
- 2.61 Designated Utility Corridors, Alternative 6
- 3.1 Greater Sage-Grouse Breeding Population Index Model
- 3.2 Average Annual Rate of Change in Greater Sage-Grouse Abundance
- 3.3 Watch and Warning Signals for Greater Sage-Grouse Population Declines, 1995-2019
- 3.4 Distinct Genetic Greater Sage-Grouse Groups
- 3.5 Greater Sage-Grouse Genetic Connectivity
- 3.6 Greater Sage-Grouse Population Clusters Declining in Genetic Diversity
- 3.7 Greater Sage-Grouse Habitat Assessment Framework, Mid-Scale Areas (Level 2)
- 3.8 Greater Sage-Grouse Habitat Assessment Framework, Fine-Scale Areas (Level 3)
- 3.9 Greater Sage-Grouse Breeding Habitat Model
- 3.10 Probability of Greater Sage-Grouse Lek Persistence
- 3.11 Modeled Potential Change in Sagebrush Biomass (2030-2060)
- 3.12 Modeled Potential Change in Sagebrush Cover (2011-2040)
- 3.13 Vegetation Communities
- 3.14 Conifer Canopy Cover
- 3.15 Acres Burned Over the Past 10 Years (2012-2022)
- 3.16 Existing Disturbances
- 3.17 Wind Potential
- 3.18 Existing Oil and Gas Leases
- 3.19 Oil and Gas Occurrence Potential
- 3.20 Existing Geothermal Leases
- 3.21 Geothermal Potential
- 3.22 BLM National Landscape Conservation System (NLCS), Other Related Lands
- 3.23 Wild Horse and Burro Herd Management Areas

Locatable Minerals and Greater Sage-Grouse Habitat Management Areas Alternative 1



Map 2.32a

PHMAs / IHMAs

GHMAs / Add'l HMAs

Locatable Minerals - Existing Withdrawals

Locatable Minerals - Recommended Withdrawals

Locatable Minerals - Open

Non-Shaded Areas: PHMAs/IHMAs

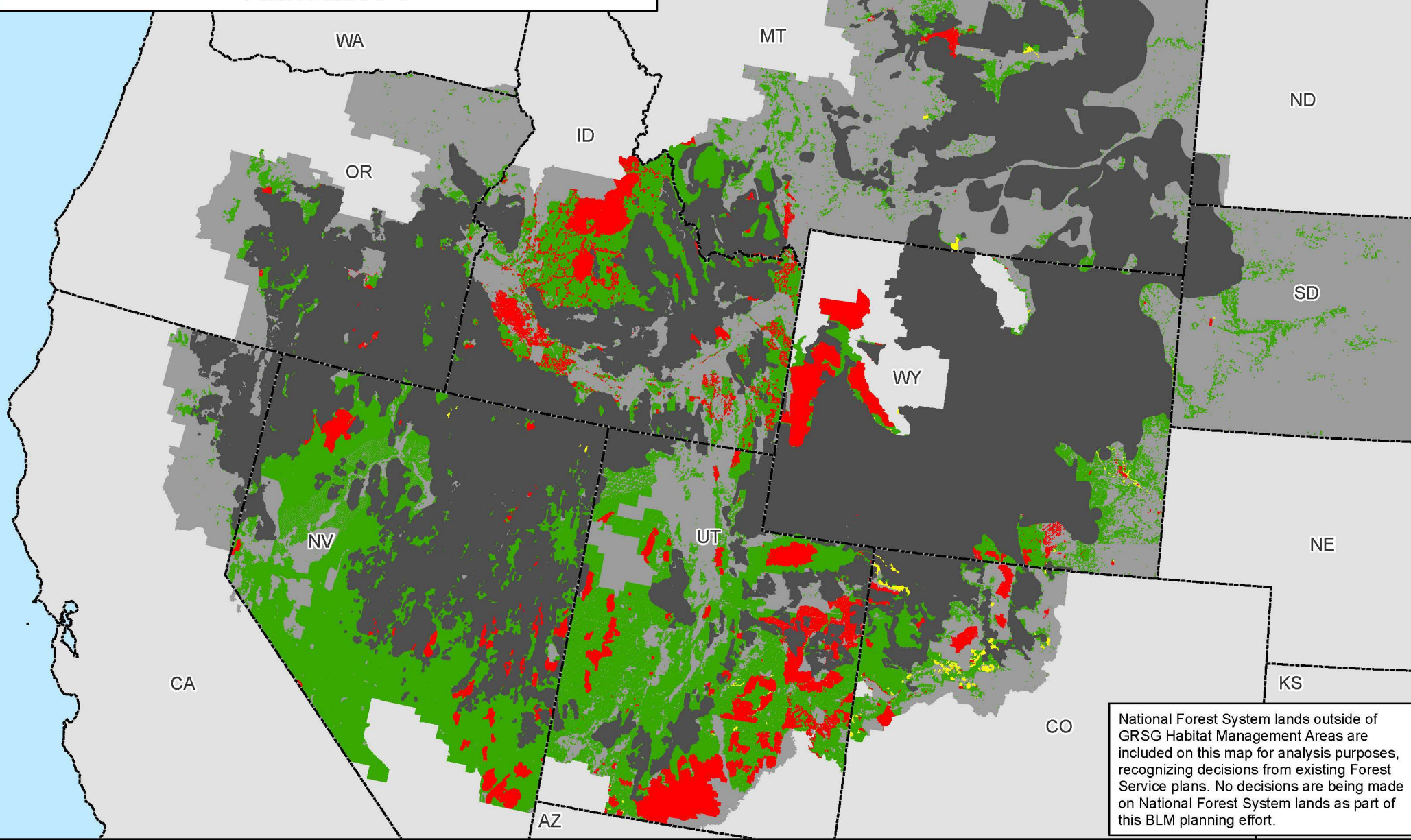
Shaded Areas: GHMAs/Additional Habitat Mgmt Areas

Non-Habitat Management Areas in the Planning Area Extent

State Boundaries

No warranty is made by the Bureau of Land Management (BLM). The accuracy, reliability, or completeness of these data for individual use or aggregate use with other data is not guaranteed.

Locatable Minerals Outside of Greater Sage-Grouse Habitat Management Areas Alternative 1



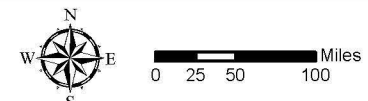
Map 2.32b

Legend

Non-Masked Areas: Outside GRSG Habitat Management Areas

Masked Areas: Within GRSG Habitat Management Areas

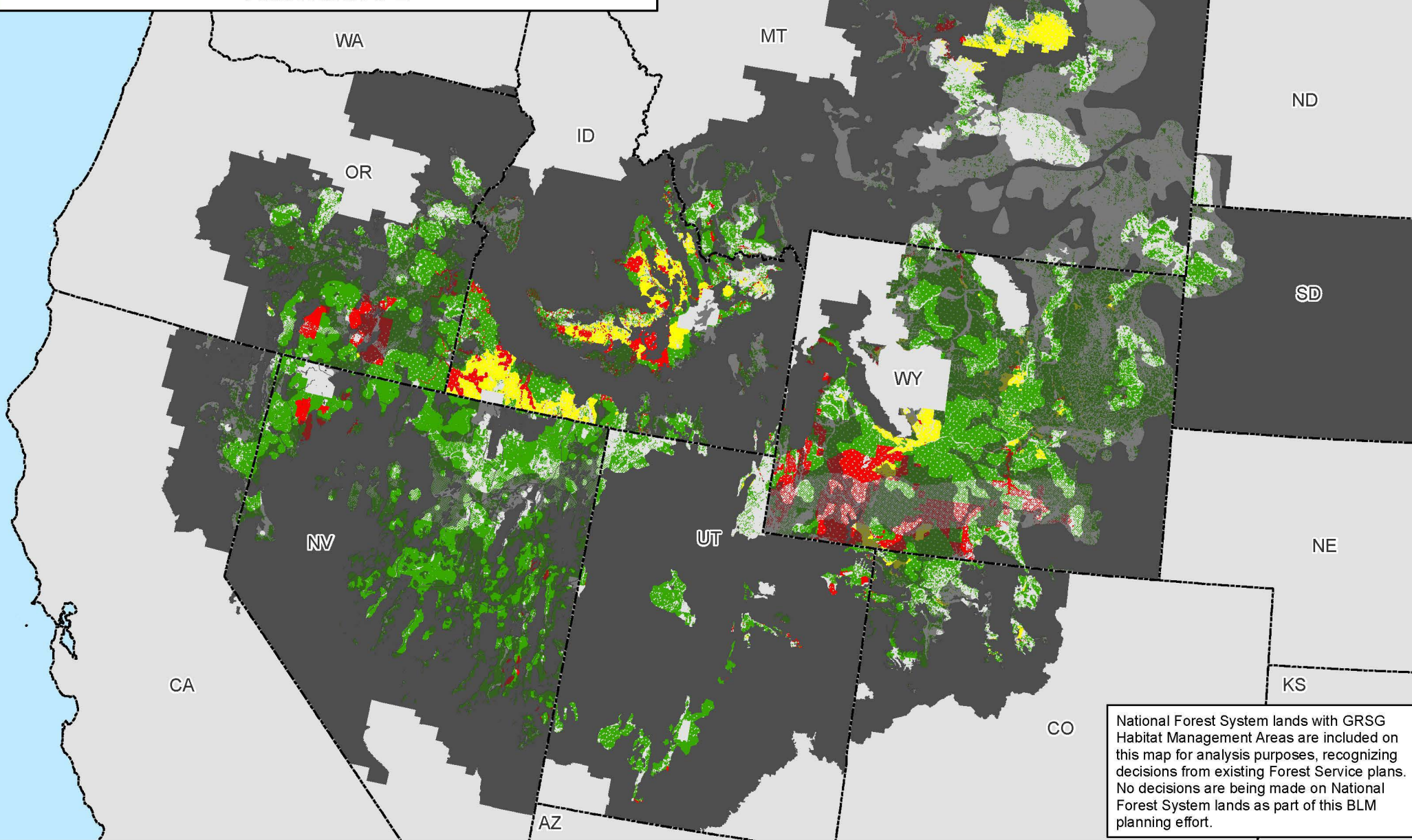
- Locatable Minerals - Existing Withdrawals
- Locatable Minerals - Recommended Withdrawals
- Locatable Minerals - Open
- GRSG Habitat Management Areas
- Planning Area Extent
- State Boundaries



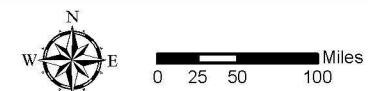
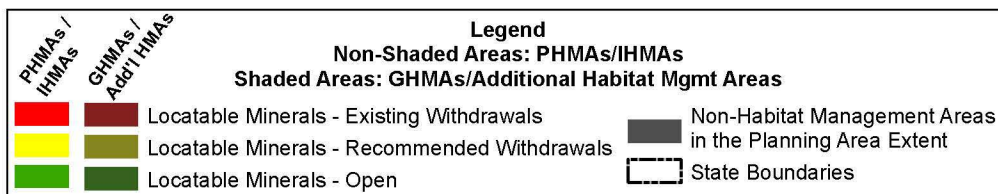
No warranty is made by the Bureau of Land Management (BLM). The accuracy, reliability, or completeness of these data for individual use or aggregate use with other data is not guaranteed.



Locatable Minerals and Greater Sage-Grouse Habitat Management Areas Alternative 2

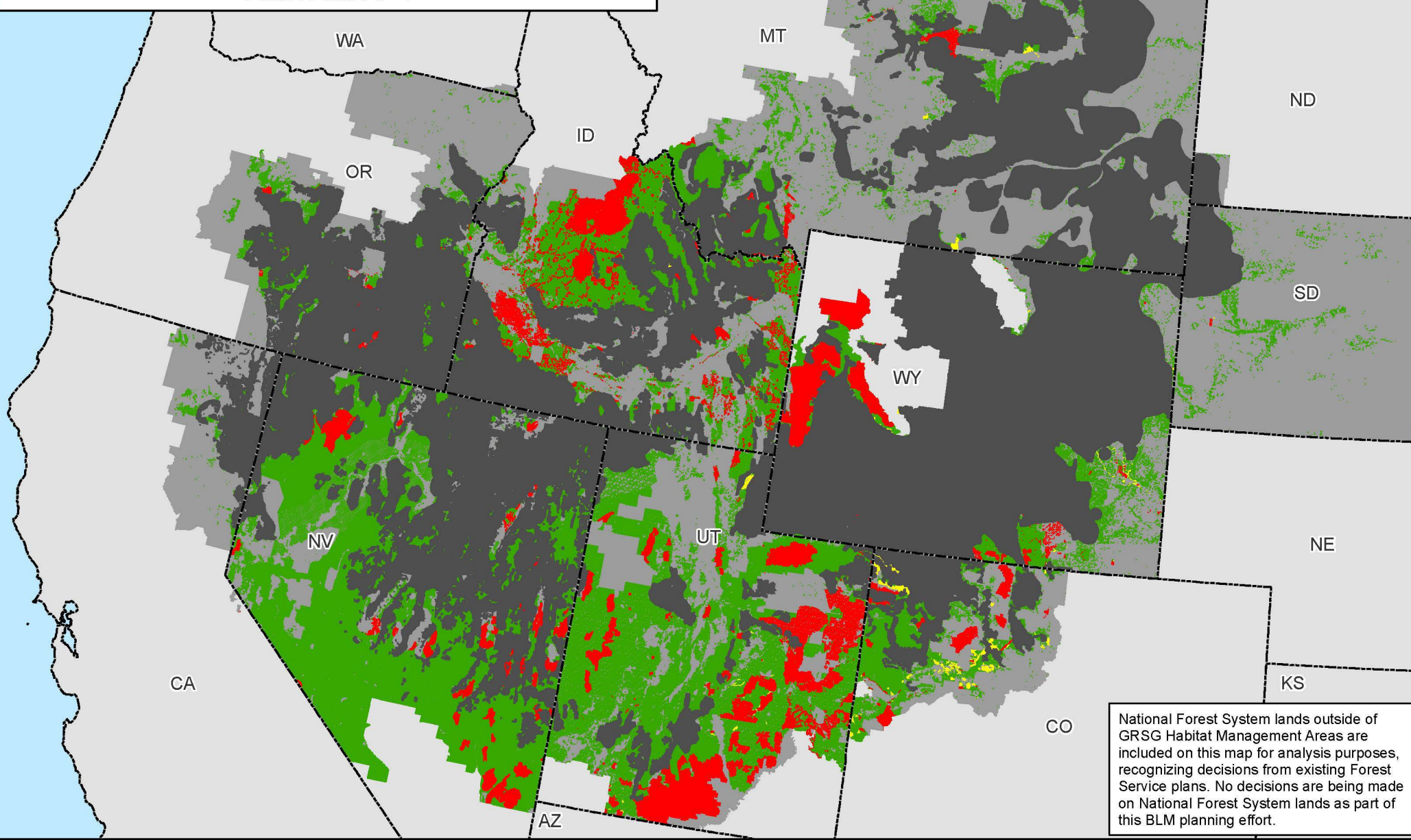


Map 2.33a



No warranty is made by the Bureau of Land Management (BLM). The accuracy, reliability, or completeness of these data for individual use or aggregate use with other data is not guaranteed.

Locatable Minerals Outside of Greater Sage-Grouse Habitat Management Areas Alternative 2



Map 2.33b

Legend

Non-Masked Areas: Outside GRSG Habitat Management Areas

Masked Areas: Within GRSG Habitat Management Areas

Locatable Minerals - Existing Withdrawals

Locatable Minerals - Recommended Withdrawals

Locatable Minerals - Open

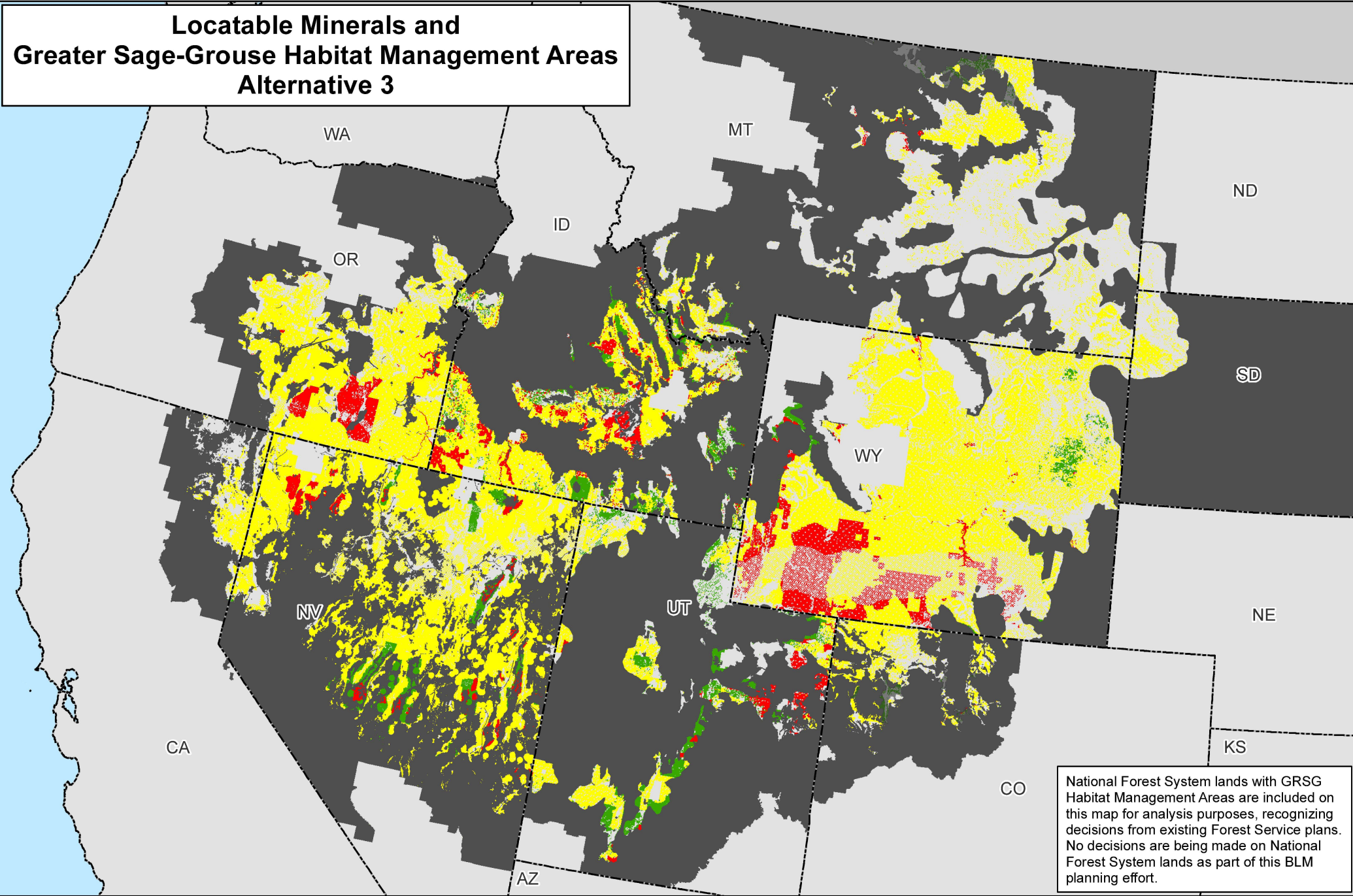
GRSG Habitat Management Areas

Planning Area Extent

State Boundaries

No warranty is made by the Bureau of Land Management (BLM). The accuracy, reliability, or completeness of these data for individual use or aggregate use with other data is not guaranteed.

Locatable Minerals and Greater Sage-Grouse Habitat Management Areas Alternative 3



National Forest System lands with GRSG Habitat Management Areas are included on this map for analysis purposes, recognizing decisions from existing Forest Service plans. No decisions are being made on National Forest System lands as part of this BLM planning effort.

Map 2.34a

PHMAs

Add'l HMAs

Locatable Minerals - Existing Withdrawals

Locatable Minerals - Recommended Withdrawals

Locatable Minerals - Open

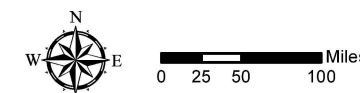
Non-Habitat Management Areas in the Planning Area Extent

State Boundaries

Legend

Non-Shaded Areas: PHMAs

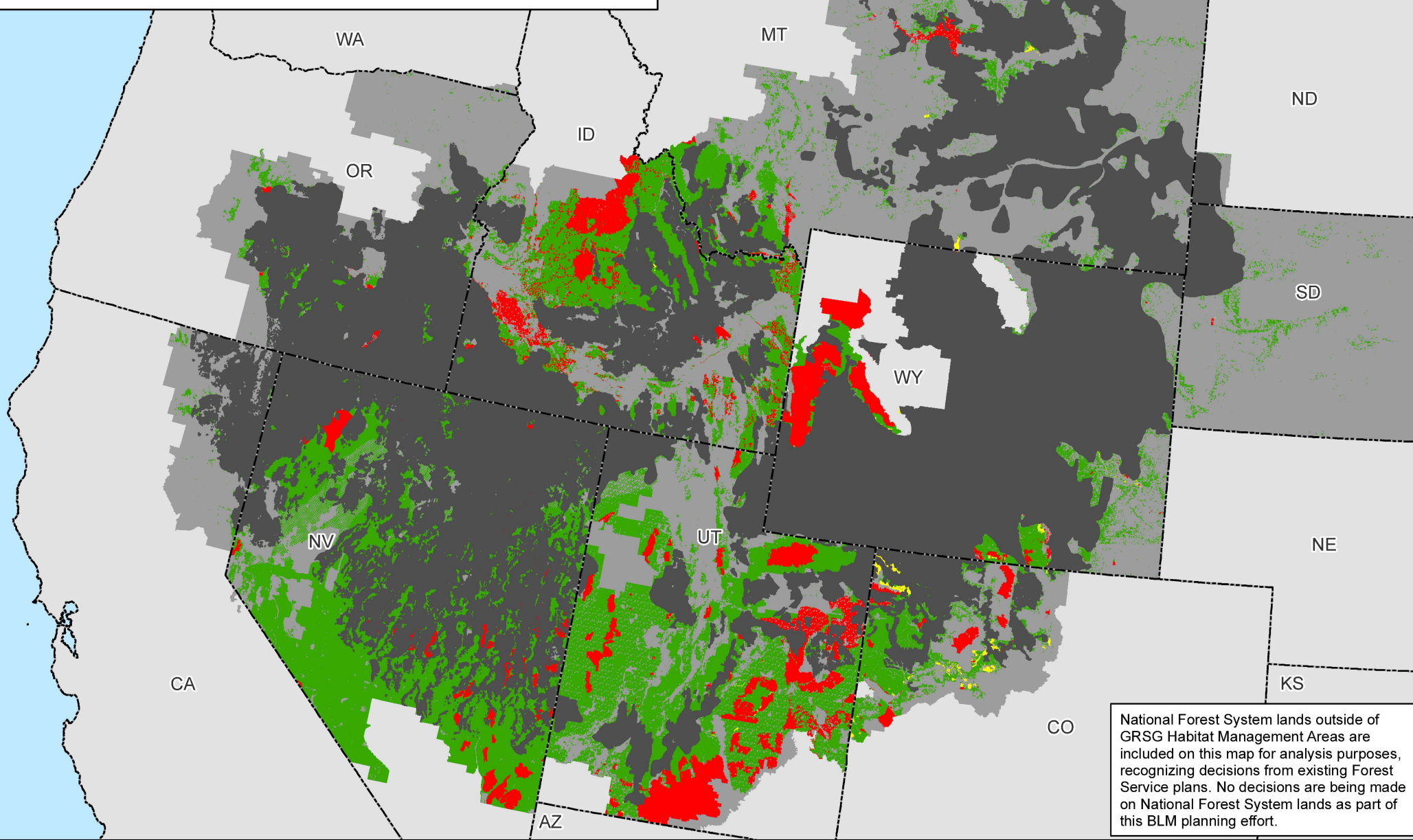
Shaded Areas: Additional Habitat Mgmt Areas



No warranty is made by the Bureau of Land Management (BLM). The accuracy, reliability, or completeness of these data for individual use or aggregate use with other data is not guaranteed.



Locatable Minerals Outside of Greater Sage-Grouse Habitat Management Areas Alternative 3



Map 2.34b

Legend

Non-Masked Areas: Outside GRSG Habitat Management Areas

Masked Areas: Within GRSG Habitat Management Areas

Locatable Minerals - Existing Withdrawals

Locatable Minerals - Recommended Withdrawals

Locatable Minerals - Open

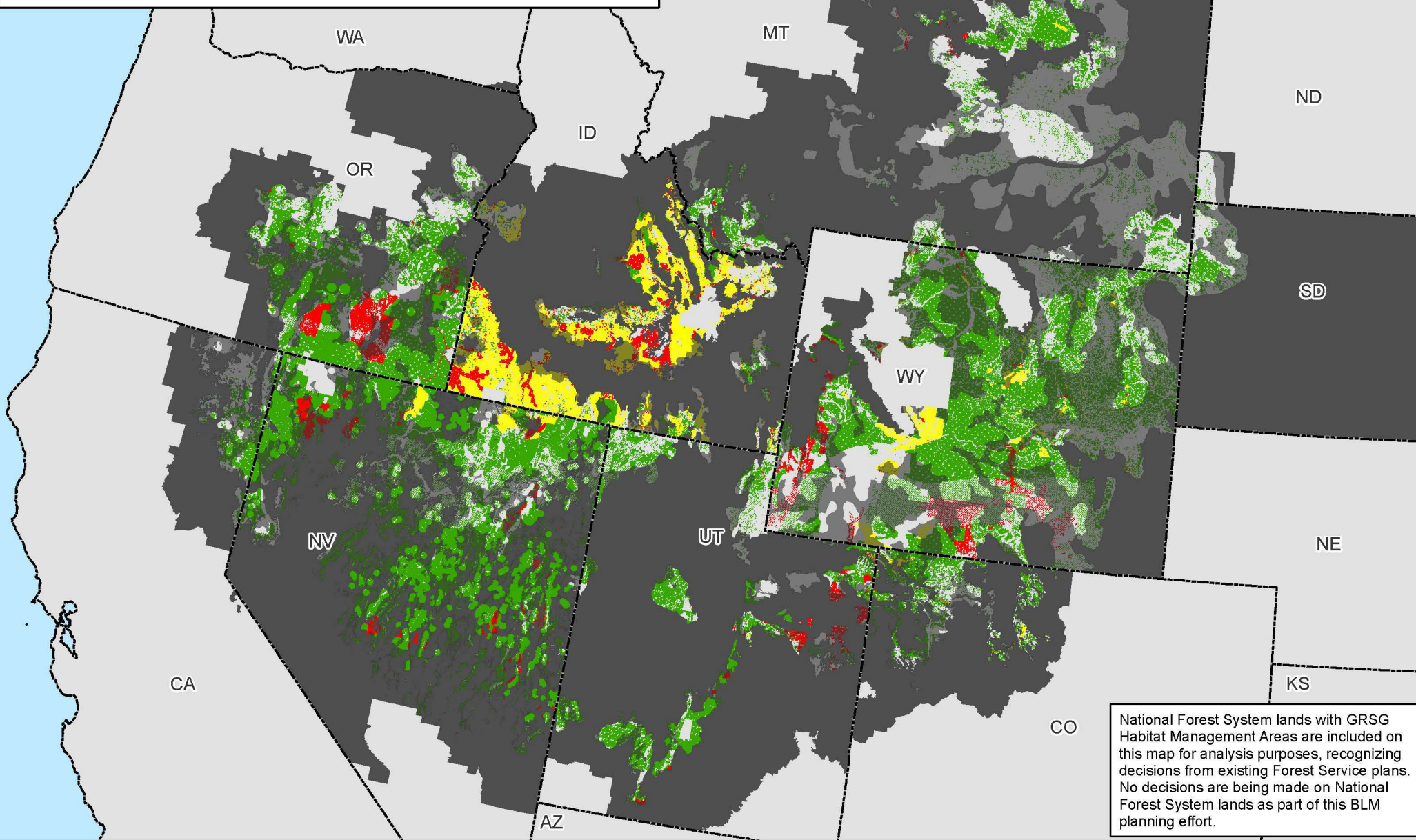
GRSG Habitat Management Areas

Planning Area Extent

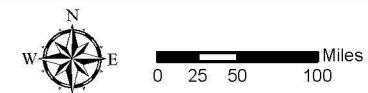
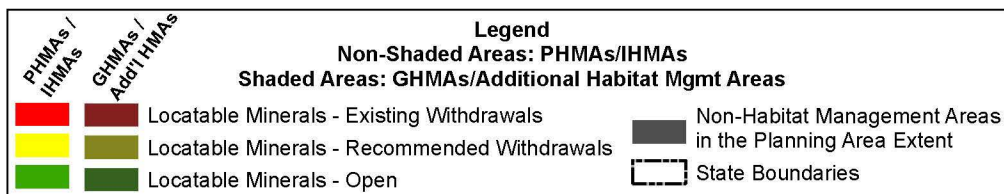
State Boundaries

No warranty is made by the Bureau of Land Management (BLM). The accuracy, reliability, or completeness of these data for individual use or aggregate use with other data is not guaranteed.

Locatable Minerals and Greater Sage-Grouse Habitat Management Areas Alternative 4



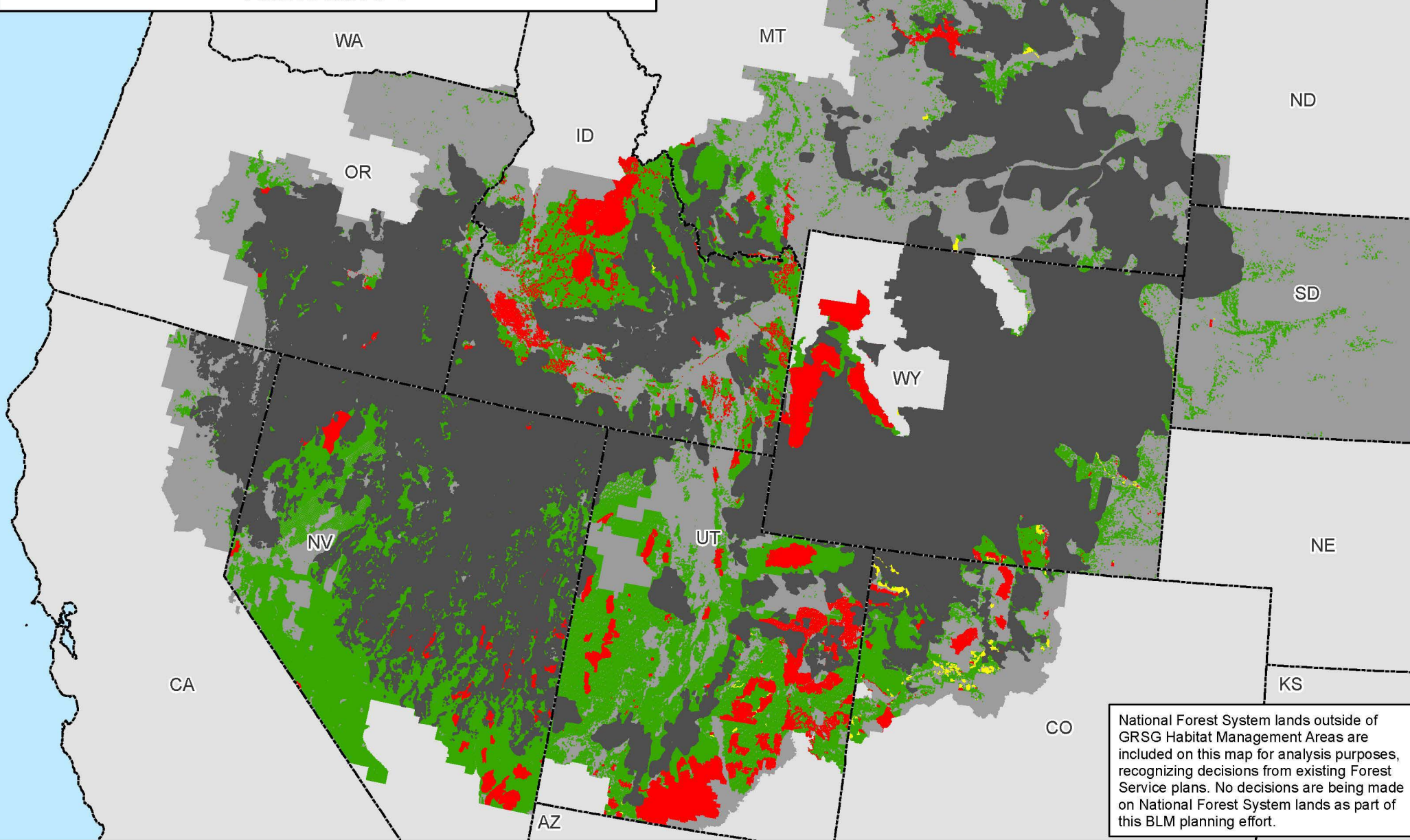
Map 2.35a



No warranty is made by the Bureau of Land Management (BLM). The accuracy, reliability, or completeness of these data for individual use or aggregate use with other data is not guaranteed.



Locatable Minerals Outside of Greater Sage-Grouse Habitat Management Areas Alternative 4



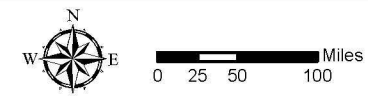
Map 2.35b

Legend

Non-Masked Areas: Outside GRSG Habitat Management Areas

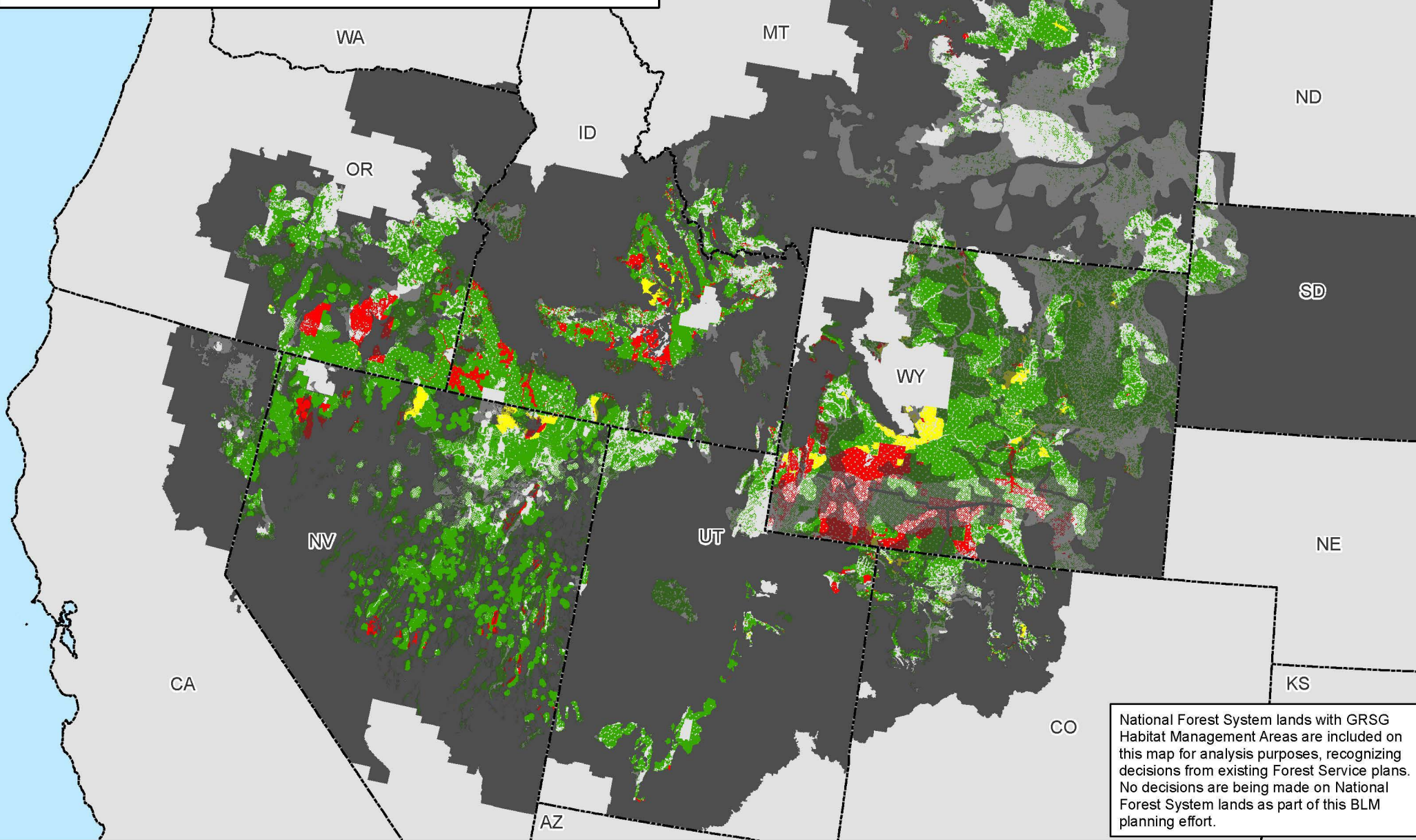
Masked Areas: Within GRSG Habitat Management Areas

- Locatable Minerals - Existing Withdrawals
- Locatable Minerals - Recommended Withdrawals
- Locatable Minerals - Open
- GRSG Habitat Management Areas
- Planning Area Extent
- State Boundaries

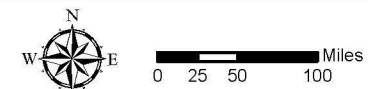
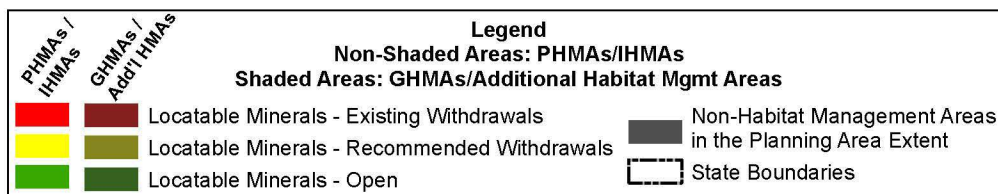


No warranty is made by the Bureau of Land Management (BLM). The accuracy, reliability, or completeness of these data for individual use or aggregate use with other data is not guaranteed.

Locatable Minerals and Greater Sage-Grouse Habitat Management Areas Alternative 5

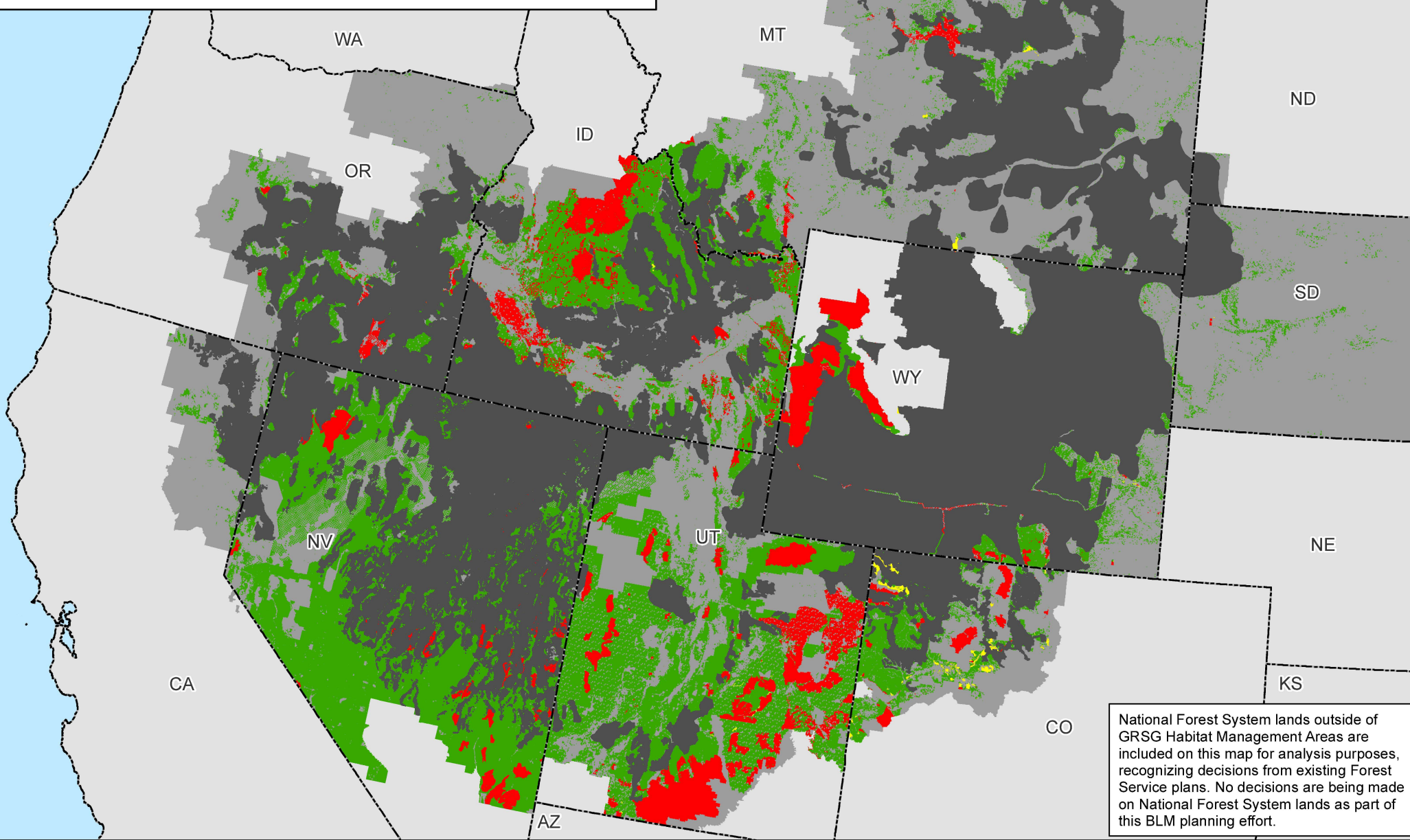


Map 2.36a



No warranty is made by the Bureau of Land Management (BLM). The accuracy, reliability, or completeness of these data for individual use or aggregate use with other data is not guaranteed.

Locatable Minerals Outside of Greater Sage-Grouse Habitat Management Areas Alternative 5



Map 2.36b

Legend

Non-Masked Areas: Outside GRSG Habitat Management Areas

Masked Areas: Within GRSG Habitat Management Areas

Locatable Minerals - Existing Withdrawals

Locatable Minerals - Recommended Withdrawals

Locatable Minerals - Open

GRSG Habitat Management Areas

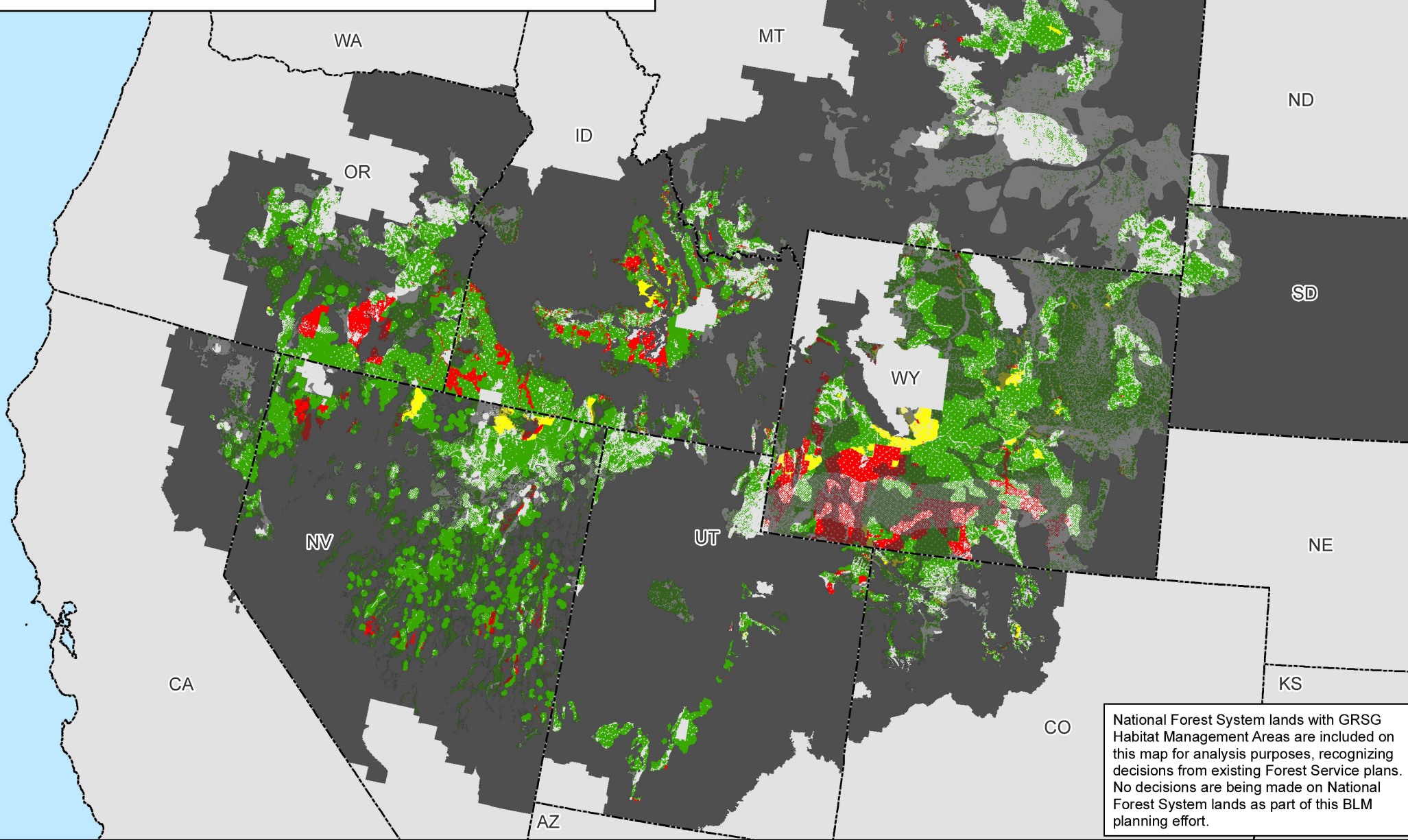
Planning Area Extent

State Boundaries

0 25 50 100 Miles

No warranty is made by the Bureau of Land Management (BLM). The accuracy, reliability, or completeness of these data for individual use or aggregate use with other data is not guaranteed.

Locatable Minerals and Greater Sage-Grouse Habitat Management Areas Alternative 6



National Forest System lands with GRSG Habitat Management Areas are included on this map for analysis purposes, recognizing decisions from existing Forest Service plans. No decisions are being made on National Forest System lands as part of this BLM planning effort.

Map 2.37a

PHMAs / IHMAs

GHMAs / Additional HMAs

Locatable Minerals - Existing Withdrawals

Locatable Minerals - Recommended Withdrawals

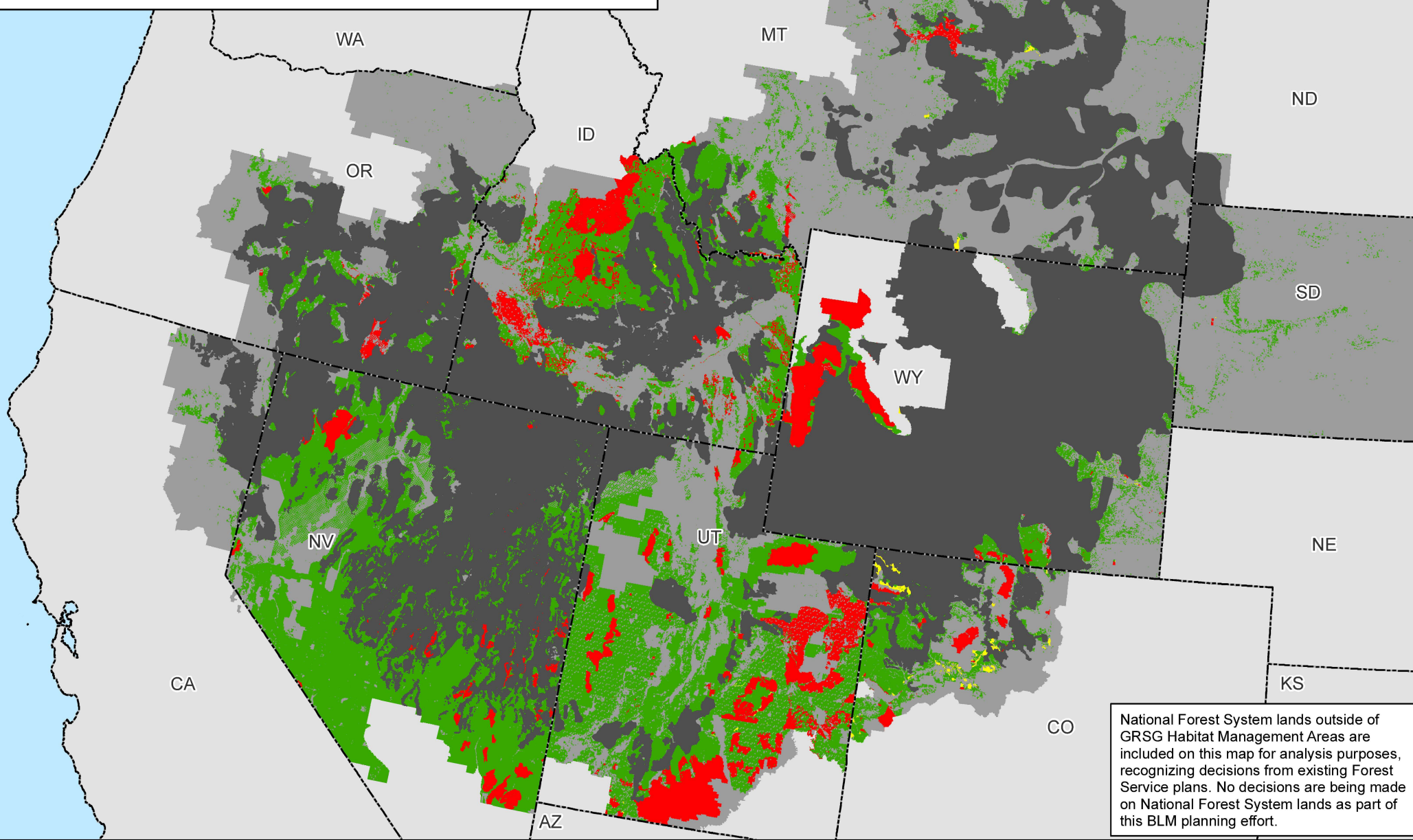
Locatable Minerals - Open

Non-Habitat Management Areas in the Planning Area Extent

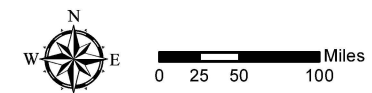
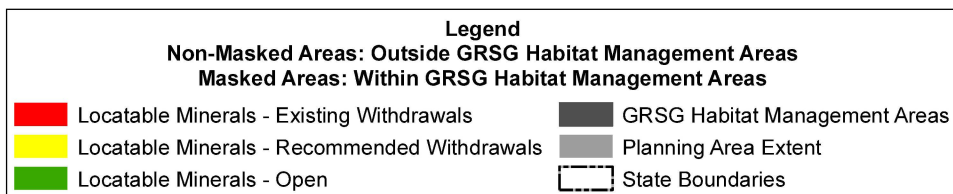
State Boundaries

No warranty is made by the Bureau of Land Management (BLM). The accuracy, reliability, or completeness of these data for individual use or aggregate use with other data is not guaranteed.

Locatable Minerals Outside of Greater Sage-Grouse Habitat Management Areas Alternative 6



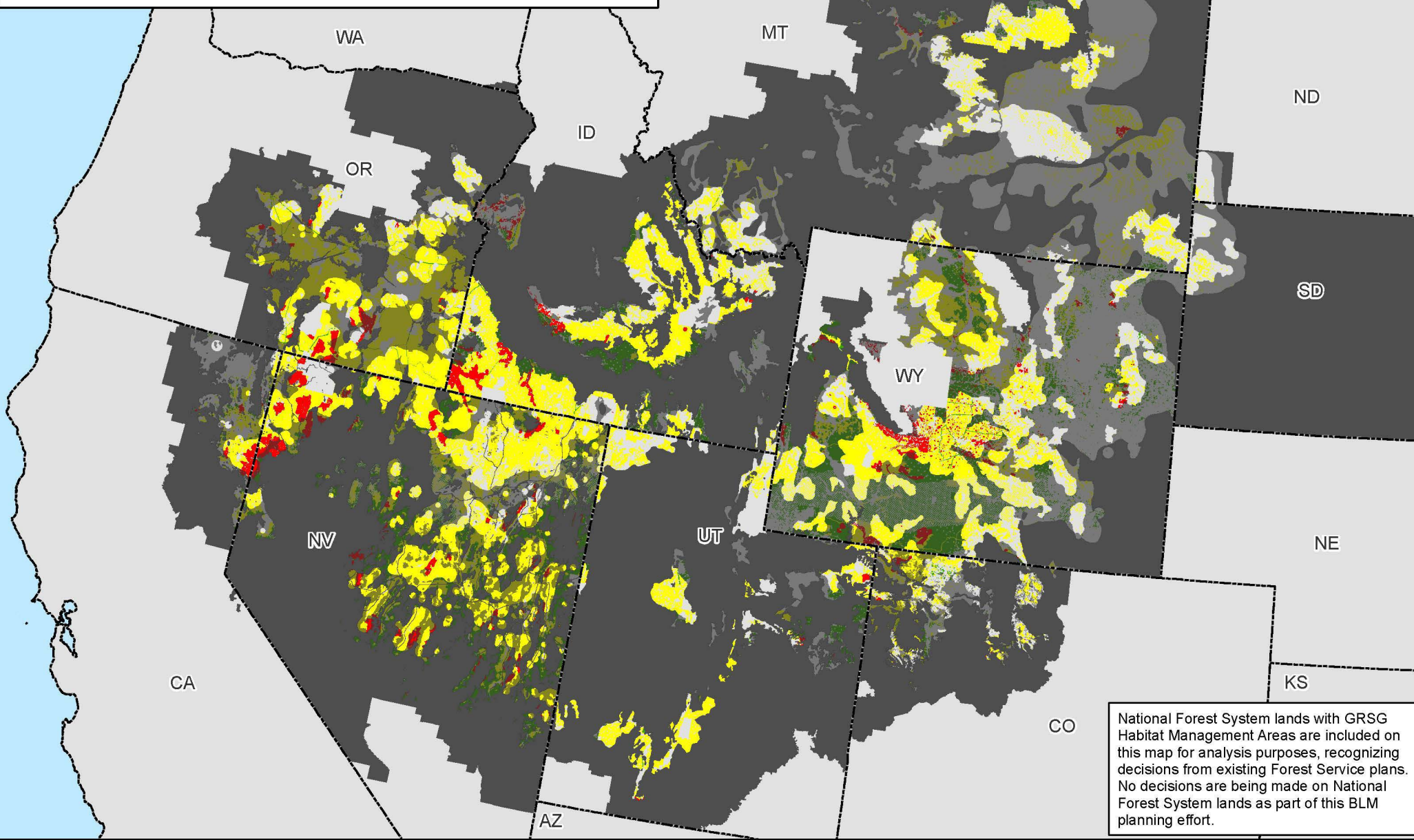
Map 2.37b



No warranty is made by the Bureau of Land Management (BLM). The accuracy, reliability, or completeness of these data for individual use or aggregate use with other data is not guaranteed.



Major Rights-of-Way Decisions and Greater Sage-Grouse Habitat Management Areas Alternative 1



National Forest System lands with GRSG Habitat Management Areas are included on this map for analysis purposes, recognizing decisions from existing Forest Service plans. No decisions are being made on National Forest System lands as part of this BLM planning effort.

Map 2.38a

PHMAs / IHMAs

GHMAs / Add'l HMAs

Major Rights-of-Way Decisions - Exclusion

Major Rights-of-Way Decisions - Avoidance

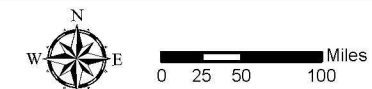
Major Rights-of-Way Decisions - Open

Non-Shaded Areas: PHMAs/IHMAs

Shaded Areas: GHMAs/Additional Habitat Mgmt Areas

Non-Habitat Management Areas in the Planning Area Extent

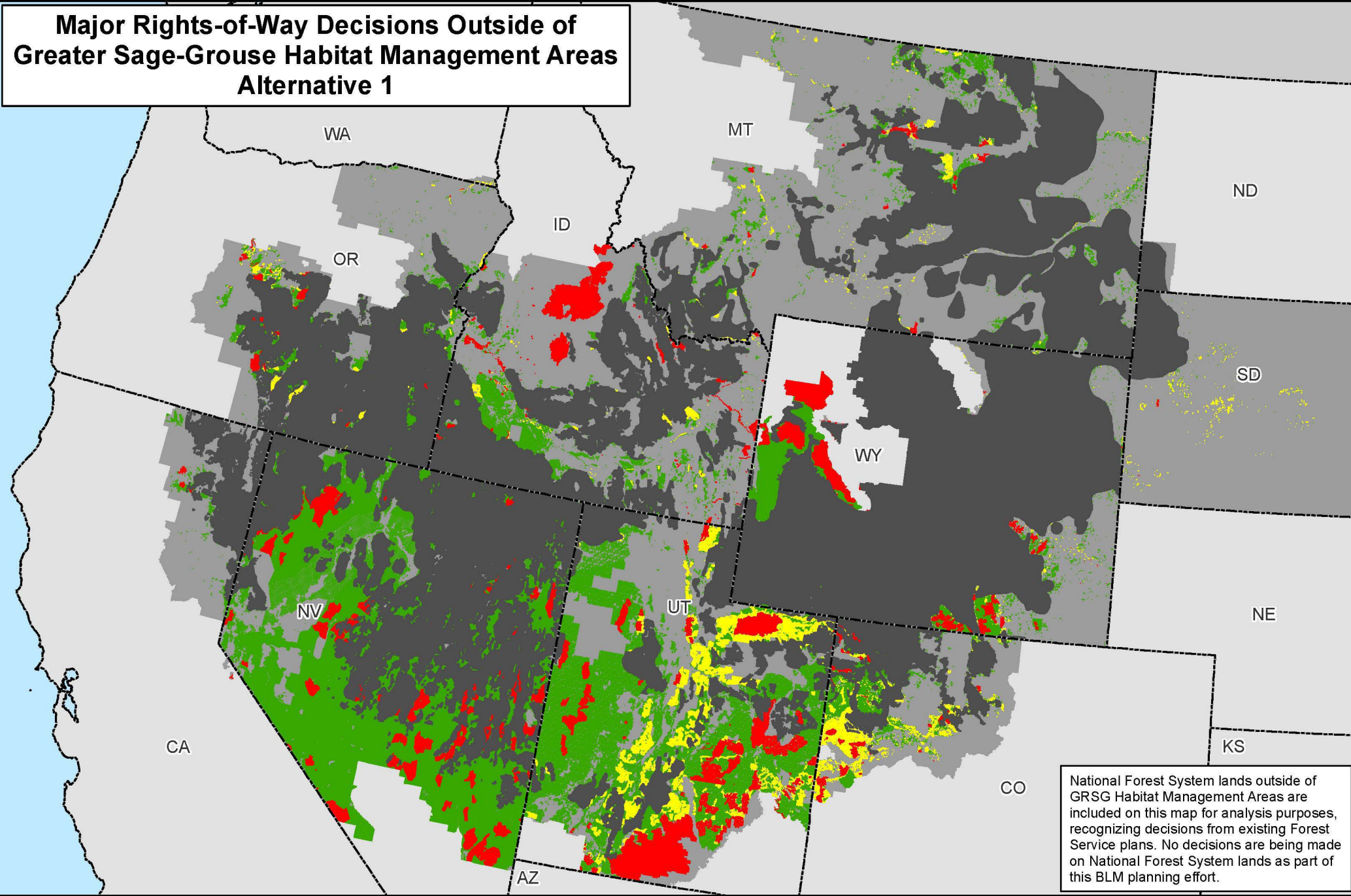
State Boundaries



No warranty is made by the Bureau of Land Management (BLM). The accuracy, reliability, or completeness of these data for individual use or aggregate use with other data is not guaranteed.



Major Rights-of-Way Decisions Outside of Greater Sage-Grouse Habitat Management Areas Alternative 1



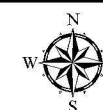
National Forest System lands outside of GRSG Habitat Management Areas are included on this map for analysis purposes, recognizing decisions from existing Forest Service plans. No decisions are being made on National Forest System lands as part of this BLM planning effort.

Map 2.38b

Legend

Non-Masked Areas: Outside GRSG Habitat Management Areas
Masked Areas: Within GRSG Habitat Management Areas

- | | |
|---|--|
| ■ Major Rights-of-Way Decisions - Exclusion | ■ GRSG Habitat Management Areas |
| ■ Major Rights-of-Way Decisions - Avoidance | ■ Planning Area Extent |
| ■ Major Rights-of-Way Decisions - Open | ■ State Boundaries |

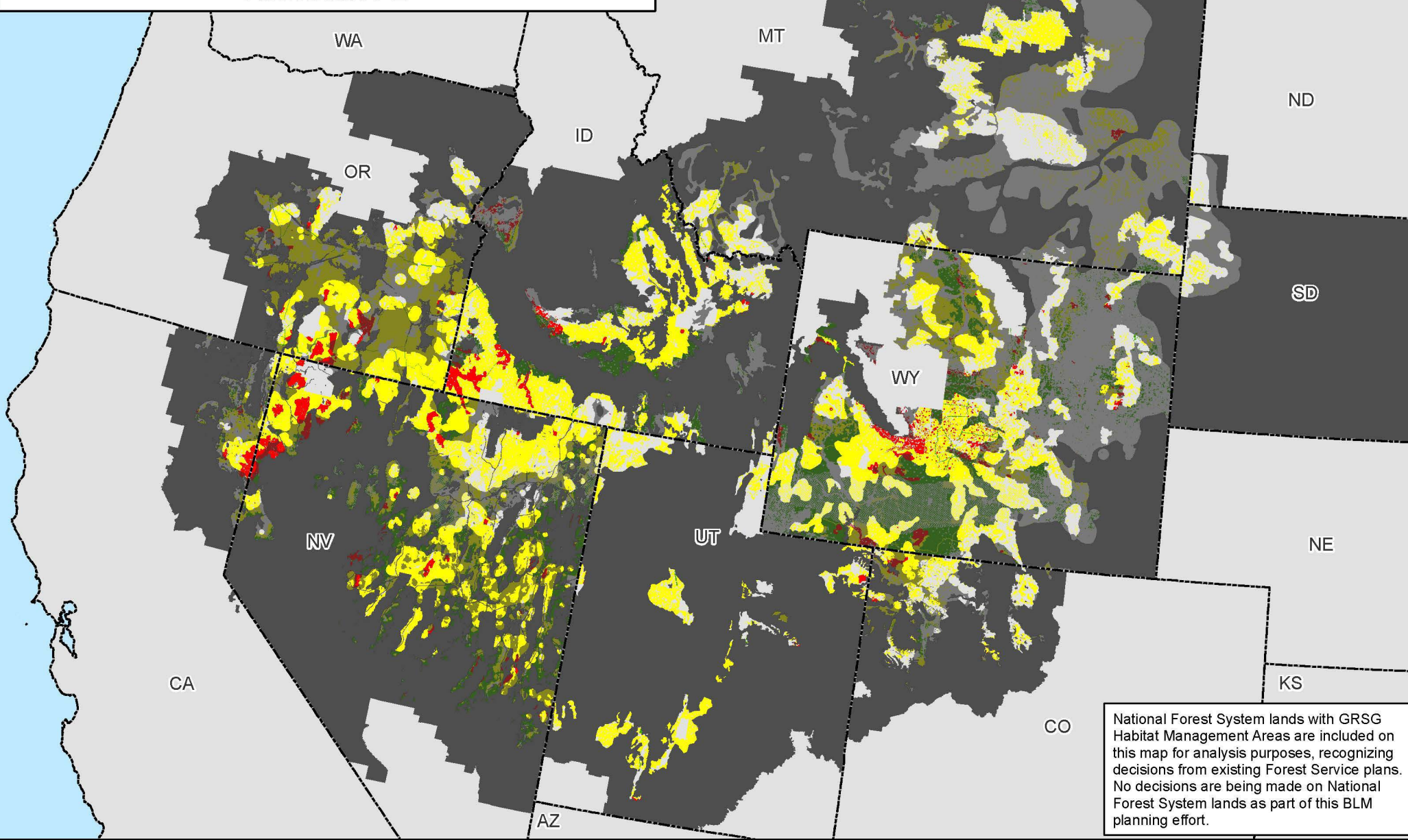


0 25 50 100 Miles

No warranty is made by the Bureau of Land Management (BLM). The accuracy, reliability, or completeness of these data for individual use or aggregate use with other data is not guaranteed.



Major Rights-of-Way Decisions and Greater Sage-Grouse Habitat Management Areas Alternative 2



National Forest System lands with GRSG Habitat Management Areas are included on this map for analysis purposes, recognizing decisions from existing Forest Service plans. No decisions are being made on National Forest System lands as part of this BLM planning effort.

Map 2.39a

PHMAs / IHMAs

GHMAs / Add'l HMAs

Major Rights-of-Way Decisions - Exclusion

Major Rights-of-Way Decisions - Avoidance

Major Rights-of-Way Decisions - Open

Non-Shaded Areas: PHMAs/IHMAs

Shaded Areas: GHMAs/Additional Habitat Mgmt Areas

Non-Habitat Management Areas in the Planning Area Extent

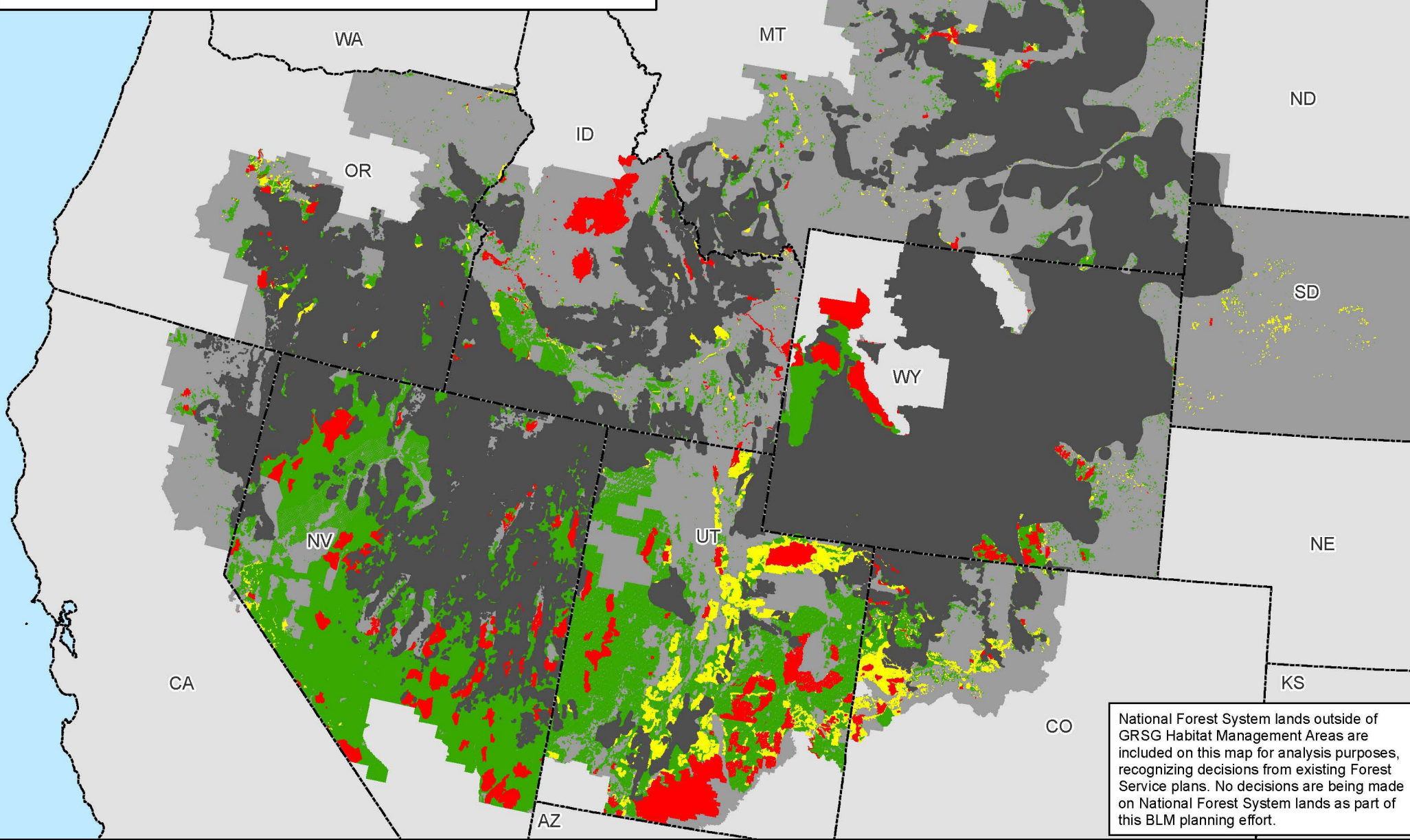
State Boundaries



No warranty is made by the Bureau of Land Management (BLM). The accuracy, reliability, or completeness of these data for individual use or aggregate use with other data is not guaranteed.



Major Rights-of-Way Decisions Outside of Greater Sage-Grouse Habitat Management Areas Alternative 2



National Forest System lands outside of GRSG Habitat Management Areas are included on this map for analysis purposes, recognizing decisions from existing Forest Service plans. No decisions are being made on National Forest System lands as part of this BLM planning effort.

Map 2.39b

Legend

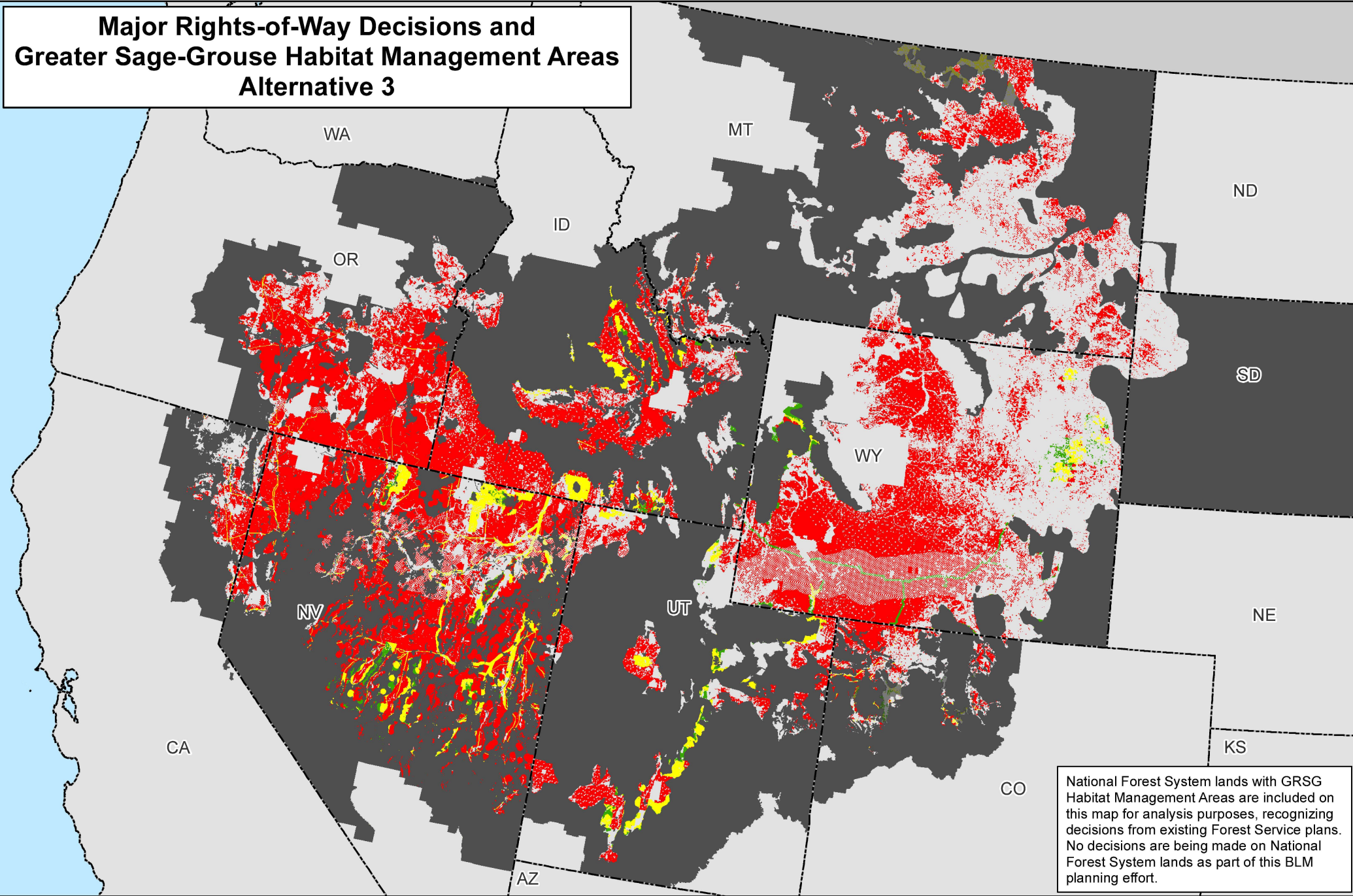
Non-Masked Areas: Outside GRSG Habitat Management Areas

Masked Areas: Within GRSG Habitat Management Areas

- Major Rights-of-Way Decisions - Exclusion
- Major Rights-of-Way Decisions - Avoidance
- Major Rights-of-Way Decisions- Open
- GRSG Habitat Management Areas
- Planning Area Extent
- State Boundaries

No warranty is made by the Bureau of Land Management (BLM). The accuracy, reliability, or completeness of these data for individual use or aggregate use with other data is not guaranteed.

Major Rights-of-Way Decisions and Greater Sage-Grouse Habitat Management Areas Alternative 3



National Forest System lands with GRSG Habitat Management Areas are included on this map for analysis purposes, recognizing decisions from existing Forest Service plans. No decisions are being made on National Forest System lands as part of this BLM planning effort.

Map 2.40a

PHMAs

Major Rights-of-Way Decisions - Exclusion

Major Rights-of-Way Decisions - Avoidance

Major Rights-of-Way Decisions - Open

Additional HMAs

Major Rights-of-Way Decisions - Exclusion

Major Rights-of-Way Decisions - Avoidance

Major Rights-of-Way Decisions - Open

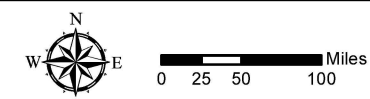
Legend

Non-Shaded Areas: PHMAs

Shaded Areas: Additional Habitat Mgmt Areas

Non-Habitat Management Areas in the Planning Area Extent

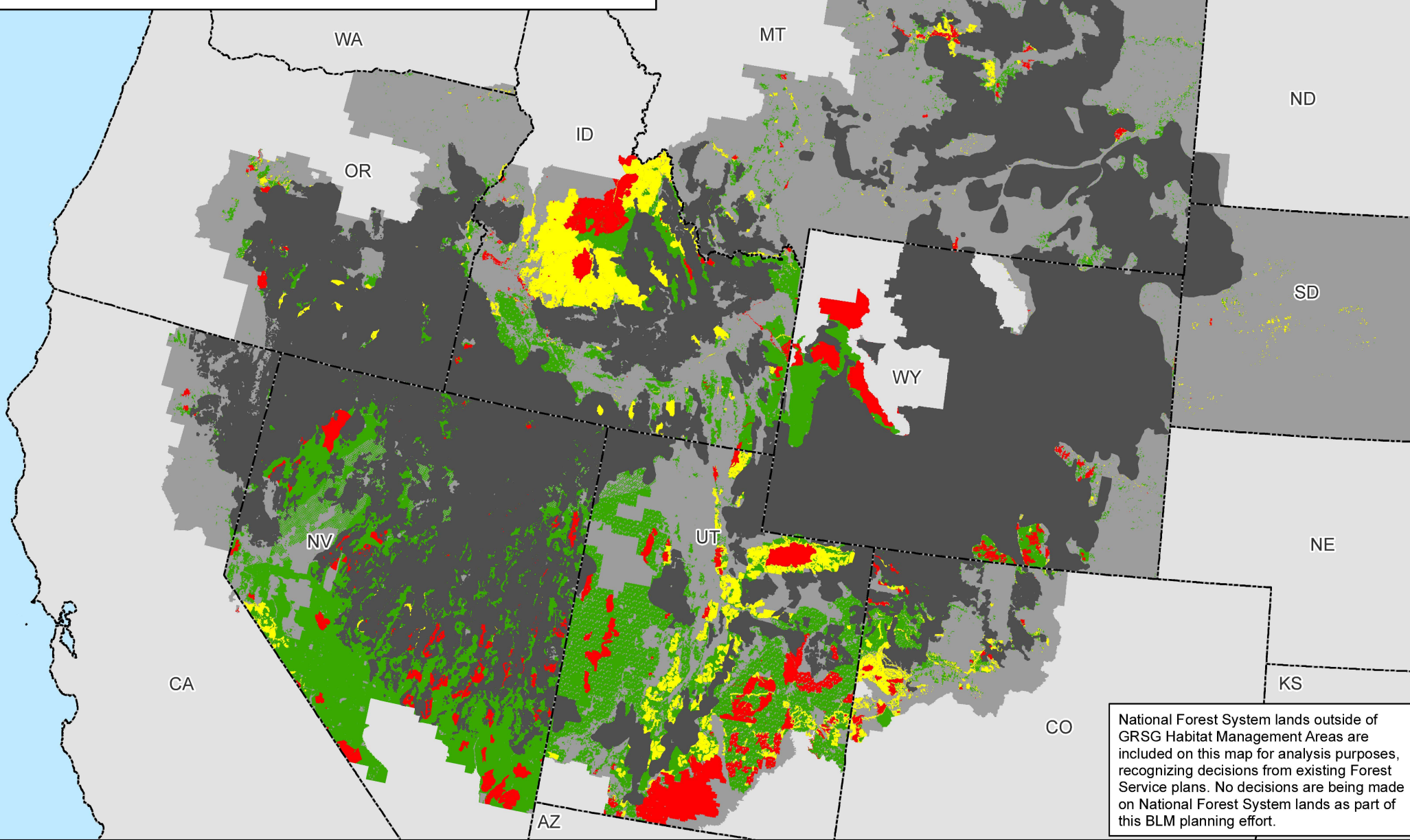
State Boundaries



No warranty is made by the Bureau of Land Management (BLM). The accuracy, reliability, or completeness of these data for individual use or aggregate use with other data is not guaranteed.



Major Rights-of-Way Decisions Outside of Greater Sage-Grouse Habitat Management Areas Alternative 3



National Forest System lands outside of GRSG Habitat Management Areas are included on this map for analysis purposes, recognizing decisions from existing Forest Service plans. No decisions are being made on National Forest System lands as part of this BLM planning effort.

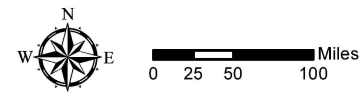
Map 2.40b

Legend

Non-Masked Areas: Outside GRSG Habitat Management Areas

Masked Areas: Within GRSG Habitat Management Areas

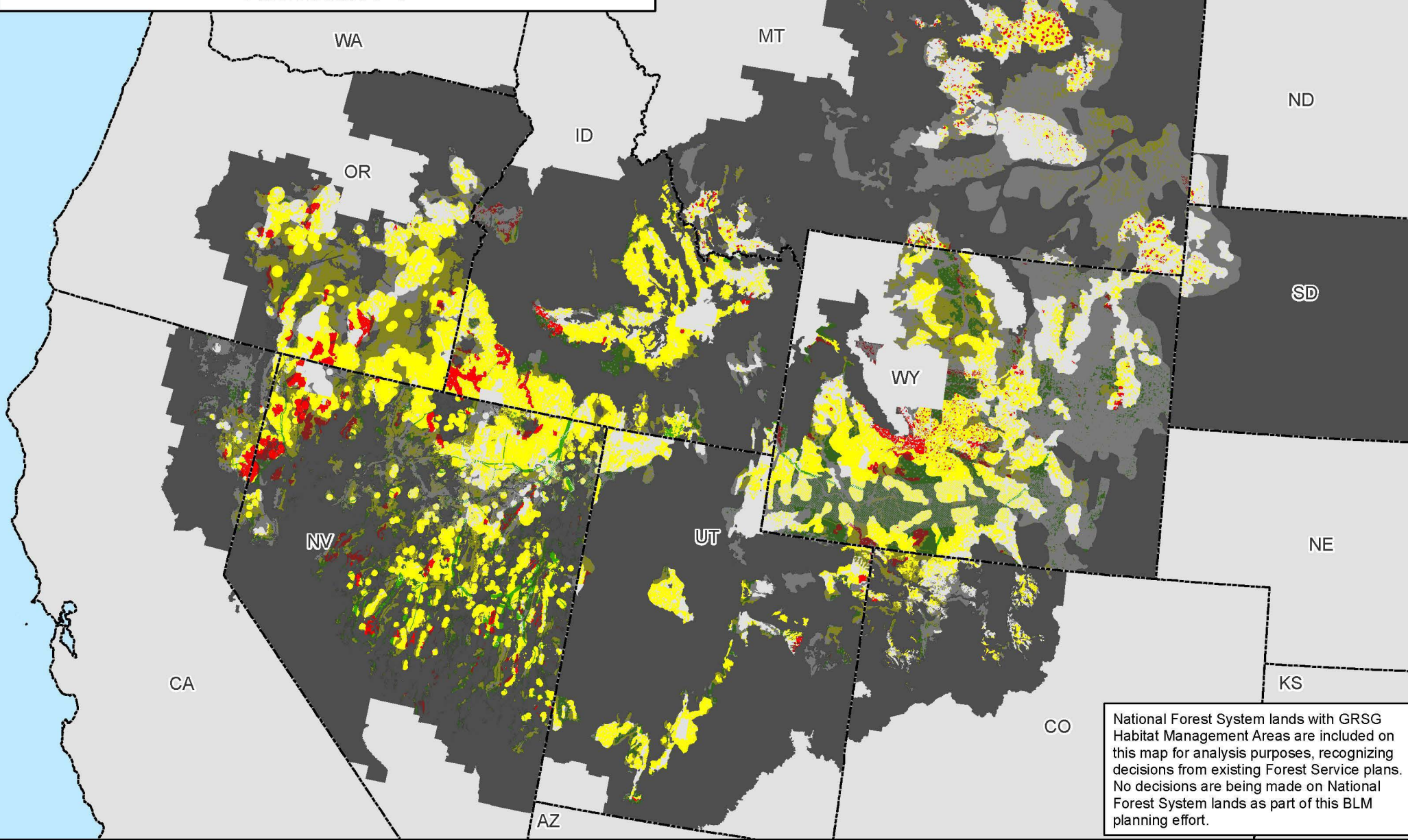
- Major Rights-of-Way Decisions - Exclusion
- Major Rights-of-Way Decisions - Avoidance
- Major Rights-of-Way Decisions - Open
- GRSG Habitat Management Areas
- Planning Area Extent
- State Boundaries



No warranty is made by the Bureau of Land Management (BLM). The accuracy, reliability, or completeness of these data for individual use or aggregate use with other data is not guaranteed.



Major Rights-of-Way Decisions and Greater Sage-Grouse Habitat Management Areas Alternative 4



National Forest System lands with GRSG Habitat Management Areas are included on this map for analysis purposes, recognizing decisions from existing Forest Service plans. No decisions are being made on National Forest System lands as part of this BLM planning effort.

Map 2.41a

PHMAs / IHMAs

GHMAs / Add'l HMAs

Major Rights-of-Way Decisions - Exclusion

Major Rights-of-Way Decisions - Avoidance

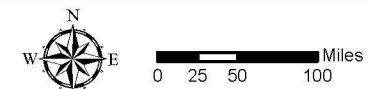
Major Rights-of-Way Decisions - Open

Non-Shaded Areas: PHMAs/IHMAs

Shaded Areas: GHMAs/Additional Habitat Mgmt Areas

Non-Habitat Management Areas in the Planning Area Extent

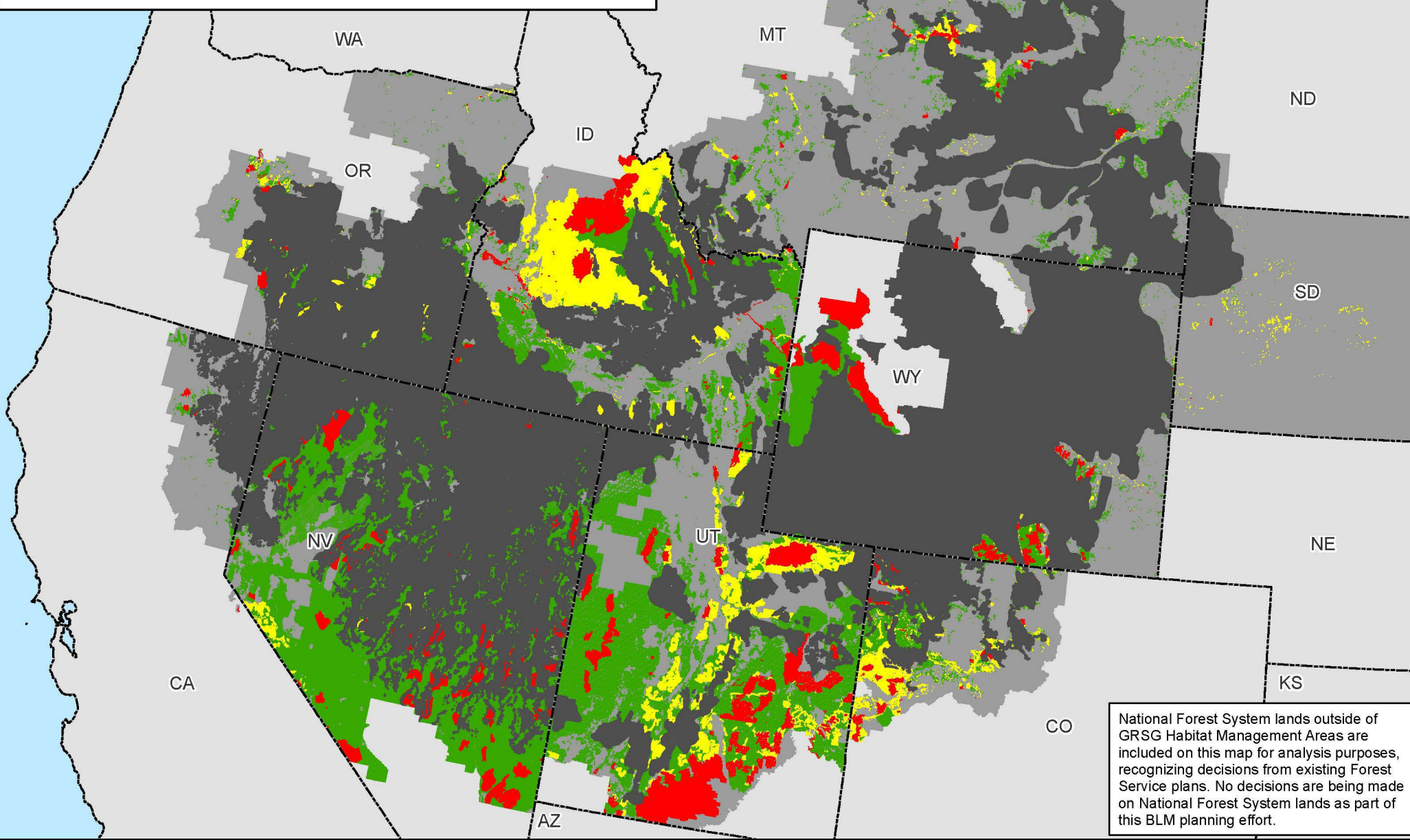
State Boundaries



No warranty is made by the Bureau of Land Management (BLM). The accuracy, reliability, or completeness of these data for individual use or aggregate use with other data is not guaranteed.



Major Rights-of-Way Decisions Outside of Greater Sage-Grouse Habitat Management Areas Alternative 4



National Forest System lands outside of GRSG Habitat Management Areas are included on this map for analysis purposes, recognizing decisions from existing Forest Service plans. No decisions are being made on National Forest System lands as part of this BLM planning effort.

Map 2.41b

Legend

Non-Masked Areas: Outside GRSG Habitat Management Areas

Masked Areas: Within GRSG Habitat Management Areas

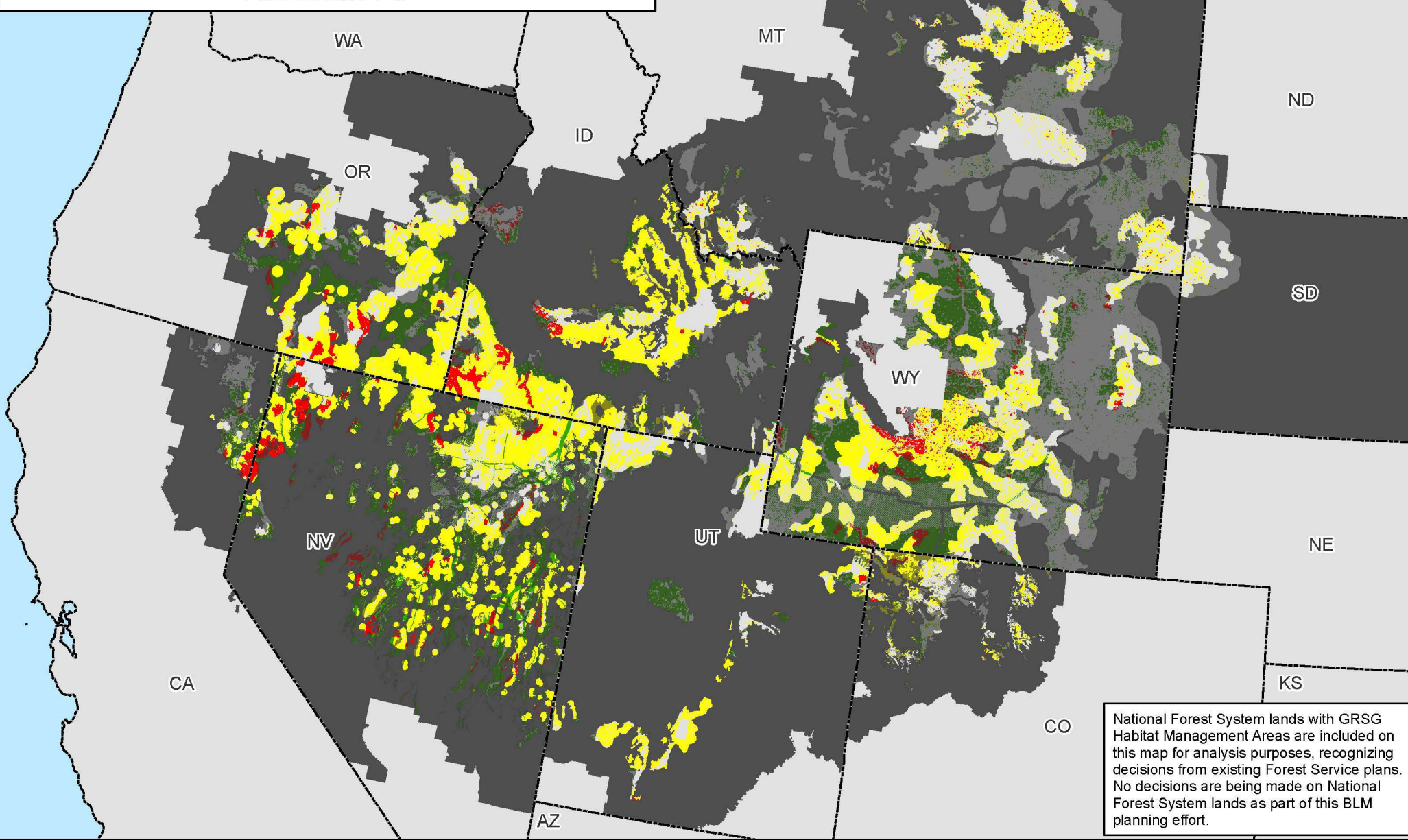
- Major Rights-of-Way Decisions - Exclusion
- Major Rights-of-Way Decisions - Avoidance
- Major Rights-of-Way Decisions - Open
- GRSG Habitat Management Areas
- Planning Area Extent
- State Boundaries



No warranty is made by the Bureau of Land Management (BLM). The accuracy, reliability, or completeness of these data for individual use or aggregate use with other data is not guaranteed.



Major Rights-of-Way Decisions and Greater Sage-Grouse Habitat Management Areas Alternative 5



National Forest System lands with GRSG Habitat Management Areas are included on this map for analysis purposes, recognizing decisions from existing Forest Service plans. No decisions are being made on National Forest System lands as part of this BLM planning effort.

Map 2.42a

PHMAs / IHMAs

GHMAs / Add'l HMAs

Major Rights-of-Way Decisions - Exclusion

Major Rights-of-Way Decisions - Avoidance

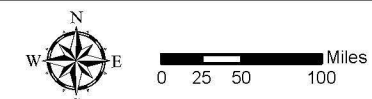
Major Rights-of-Way Decisions - Open

Non-Shaded Areas: PHMAs/IHMAs

Shaded Areas: GHMAs/Additional Habitat Mgmt Areas

Non-Habitat Management Areas in the Planning Area Extent

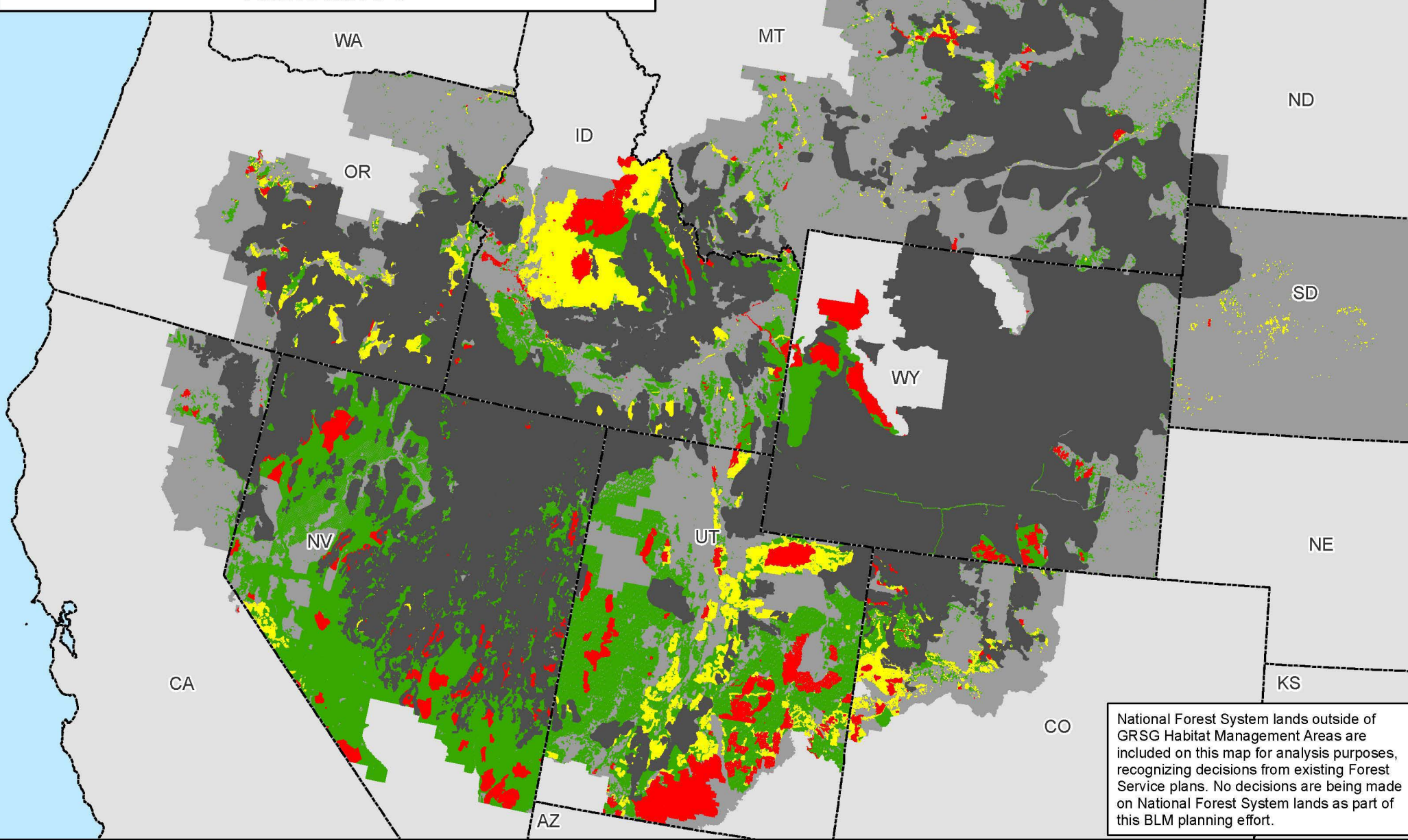
State Boundaries



No warranty is made by the Bureau of Land Management (BLM). The accuracy, reliability, or completeness of these data for individual use or aggregate use with other data is not guaranteed.



Major Rights-of-Way Decisions Outside of Greater Sage-Grouse Habitat Management Areas Alternative 5



National Forest System lands outside of GRSG Habitat Management Areas are included on this map for analysis purposes, recognizing decisions from existing Forest Service plans. No decisions are being made on National Forest System lands as part of this BLM planning effort.

Map 2.42b

Legend

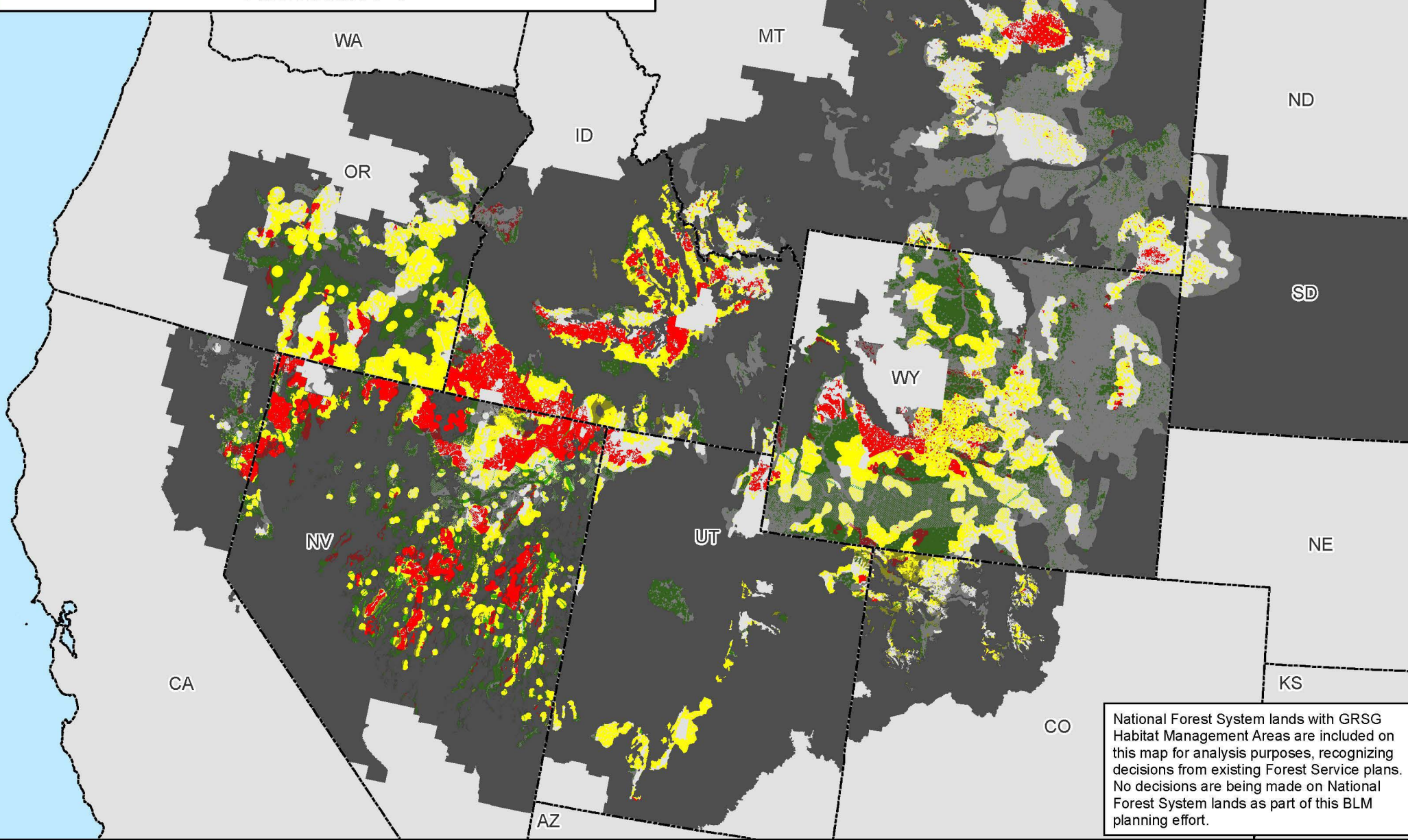
Non-Masked Areas: Outside GRSG Habitat Management Areas

Masked Areas: Within GRSG Habitat Management Areas

- Major Rights-of-Way Decisions - Exclusion
- Major Rights-of-Way Decisions - Avoidance
- Major Rights-of-Way Decisions - Open
- GRSG Habitat Management Areas
- Planning Area Extent
- State Boundaries

No warranty is made by the Bureau of Land Management (BLM). The accuracy, reliability, or completeness of these data for individual use or aggregate use with other data is not guaranteed.

Major Rights-of-Way Decisions and Greater Sage-Grouse Habitat Management Areas Alternative 6



National Forest System lands with GRSG Habitat Management Areas are included on this map for analysis purposes, recognizing decisions from existing Forest Service plans. No decisions are being made on National Forest System lands as part of this BLM planning effort.

Map 2.43a

PHMAs / IHMAs

GHMAs / Add'l HMAs

Major Rights-of-Way Decisions - Exclusion

Major Rights-of-Way Decisions - Avoidance

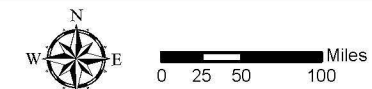
Major Rights-of-Way Decisions - Open

Non-Shaded Areas: PHMAs/IHMAs

Shaded Areas: GHMAs/Additional Habitat Mgmt Areas

Non-Habitat Management Areas in the Planning Area Extent

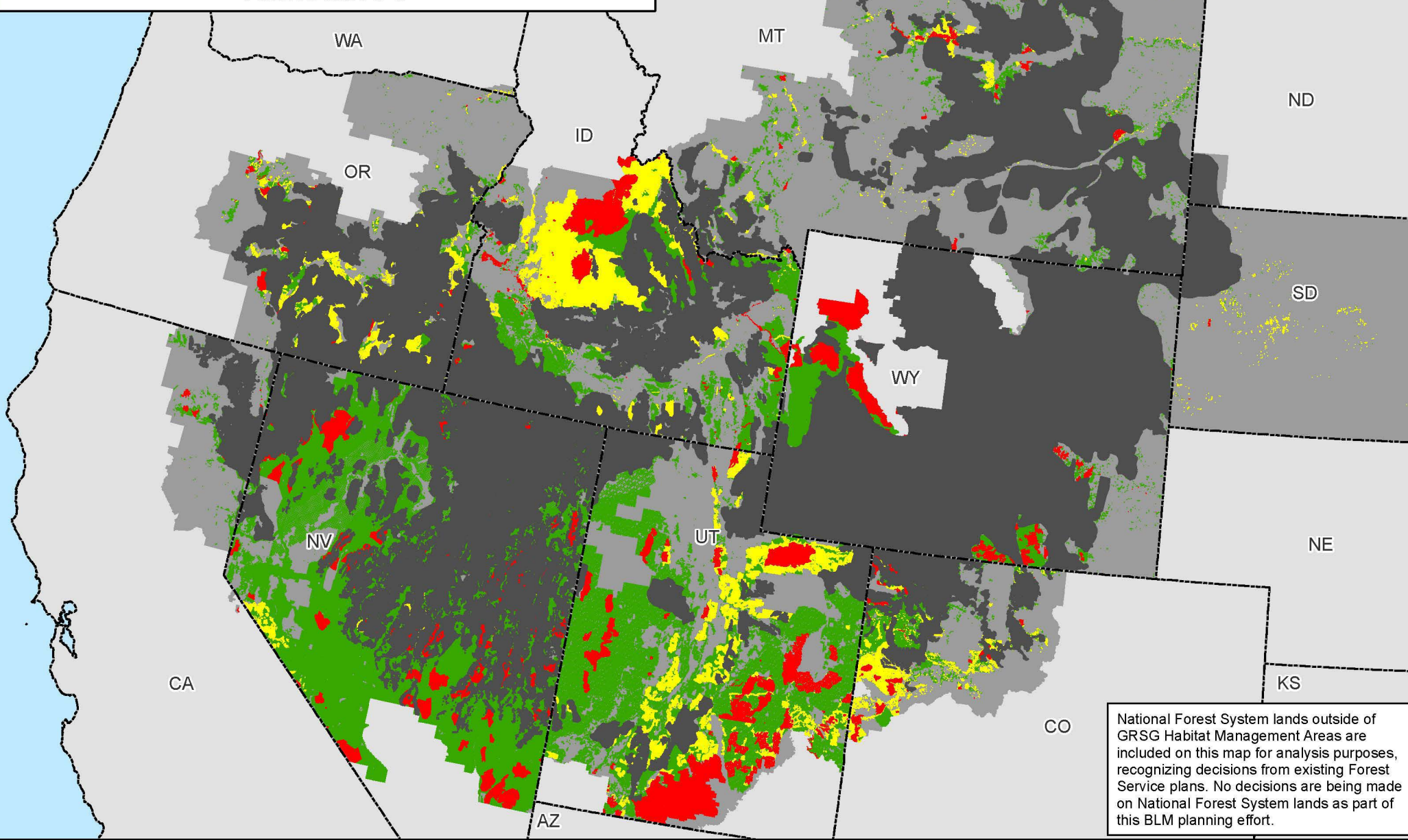
State Boundaries



No warranty is made by the Bureau of Land Management (BLM). The accuracy, reliability, or completeness of these data for individual use or aggregate use with other data is not guaranteed.



Major Rights-of-Way Decisions Outside of Greater Sage-Grouse Habitat Management Areas Alternative 6



Map 2.43b

